

QUARTERLY

Spiritual Astrology Series: Gemini



FALL 2022 VOLUME 97,
ISSUE 4

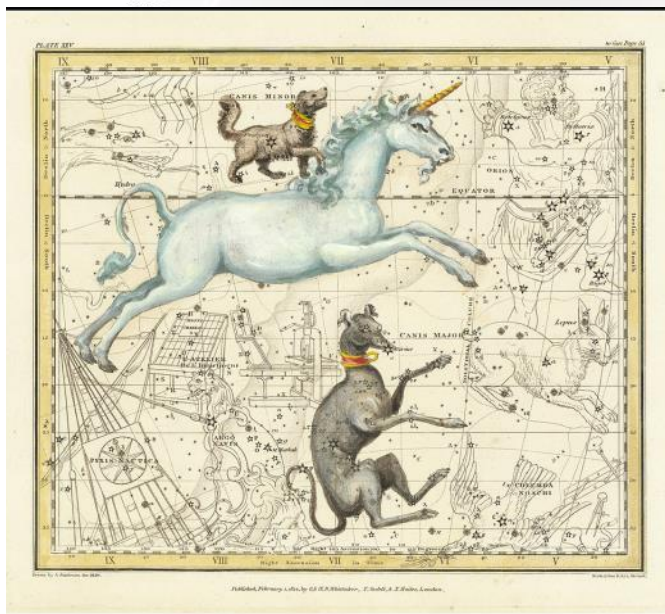
Gemini-Libra in the Quest of Spirit:

Canis Major: "To Thine Own Self Be True"

MaryMeg Dissinger

This Above All; To Thine Own Self Be True; And It Must Follow As the Night the Day, Thou Canst Not Then Be False to Any Man.

The keyword for this Libra decanate of Gemini is Fidelity. In Cs. XI, *Delineating the Horoscope*, Zain says, "This noble looking beast is the emblem of faithfulness, and through its adoration for its master also repre-



(Continued on page 4)

Spiritual Astrology: Canis Major

The Greater Dog

Scenza

Each of the twelve primary signs of the Zodiac is further subdivided into three ten-degree sections called decanates. The decanates enjoy a primary influence from their mother sign, and a

secondary influence from each of the signs that shares the same element as that sign. Hence, the second decanate of the third sign, *Canis Major*, is termed *Gemini-Libra*, as it is found within the primary sign Gemini, and enjoys a secondary influ-

ence of the second Air sign, Libra. The Keyword for this decanate is "Fidelity", and it extends from June 1 to June 12 of each year.

As explained above, the decanates are subordinate

(Continued on page 6)

Inside this issue:

Being Faithful...	1
Spiritual Astrology: The Greater Dog	1
Stellarian Honor Guard	2
Editorial	3
The Spiritual Teachings of Astrology	10
Snaps from the Conference	16
Membership Room	18
Our Mission	20

Consider that ...

- "Canis Major - "This noble looking beast is the emblem of faithfulness, and through its adoration for its master also represents the worshiping and serving of Deity—for to the dog his master is God"

— Spiritual Astrology

- The good of any person resides in their character, and character is sound only so long as it has due regard and sympathy for the interests of others.

— Spiritual Astrology

- We live on a blue planet that circles around a ball of fire next to a moon that moves the sea and you don't believe in miracles?

— Anonymous



The Stellarian Honor Guard

For the period between April 1, and June 30, 2022.

Regular Contributors form the solid foundation from which The Church of Light can grow. This column honors those who financially support the work of spreading the Religion of the Stars. Guardian Angels contribute more than \$500 in a quarter. The Stellarian Honor Guard includes those who contribute between \$100 and \$500 per quarter. We are grateful for your generous contributions to The Church of Light.



“There are three ways to ultimate success.

The first way is to be kind.

The second way is to be kind.

The third way is to be kind.”

— *Mister Rogers*

Guardian Angels

- Anonymous
- Patricia Beard
- Paul & Vicki Brewer
- William D. Buchan
- Steve Carrothers
- Bi-Annual Convention
- Adriana Donofrio
- Ruben Estrella
- Margaret Joscher
- Alicemarie O'Neill
- Alexander Pohorily

Stellarian Honor Guard

- Anonymous
- Keith Benjamin
- Karl F. Berger
- Paul Bergner
- Yvonne Bonner
- Nathan Burd
- Jeffrey Daugherty
- Fatima Dauntess
- Mary Meg Dissinger
- Aurelio Dorris
- Misty Downing
- Alan Gatlin
- Janet Johnson

- Brian Jones
- Stephan LaFreniere
- Erin MacLean
- Errick Miron
- Blanchard Nash
- Dorothy Ochieng
- Veiga O'Sickey
- Rebecca Penrose
- Candace Piccola
- Richard Redick
- Delbert Rich
- Theodore W. Robinson
- John Ross
- Evelyn Sacko
- Sharon Sanders
- Dudley Slade
- Rena Stiney
- George Uy
- Kathy White
- Gloria Woody

Regular Contributors

- Anonymous
- Cynthia Barnes
- Victor Battaglia
- Frank Bowen
- Adrian Bryan

- Claudia Clark
- Jeffrey Coleman
- Dave DeFino
- Mark Doubleday
- Christopher Gibson
- Michael Herron
- Thomas Higgins
- Damian Kellogg
- Barbara Kniffen
- Susan Lussos
- Omari Martin
- Joseph Miller
- Naim Najieb
- Michelle Berry Robbins
- Rhiannon Rollins
- Antoine Sanders
- Jeremy Schwartz
- Stefanie Thomas
- Joan Titsworth
- Marsteller
- Teodora Tshering
- Ebri Willie
- Frederick Wilson
- Jean Wright



FALL ISSUE 2022

ISSN: 009-6520
Vol. 97, No. 4

PUBLISHED BY

The Church of Light

EDITORS

*Peg Joscher
Vicki Brewer*

COPY EDITOR

Radine Ramsey

PRODUCTION MANAGER

Veiga O'Sickey

The Church of Light Quarterly is the official publication of the Church of Light. It includes educational and inspirational supplements to The Brotherhood of Light Lessons.

DIRECTORS

Margaret Joscher, President CA
Veiga O'Sickey, Vice Pres., NM
Patrick Ramsey, Secretary, NM
Dave Carrothers, Treasurer, NV
Neil Cantwell, MO
Barbara Sibley, FL
Alan Gatlin, San Antonio, TX

HONORARY DIRECTORS

Paul Brewer, NM
Christopher Gibson, NM

Please address all communications to:

The Church of Light
2119 Gold Ave SE
Albuquerque, NM 87106-4072
tel: 505 247-1338
fax: 505 814-7318

Email: churchoflight@light.org

Editorial

Margaret Joscher, President

“Semper Fi ”

— U.S. Marine Corps

For centuries, many organizations have defined and adhered to a code of conduct. One of the oldest is the medieval knightly code of chivalry which promoted moral virtues. One of these virtues was faithfulness, loyalty or allegiance. In most cases, loyalty would be pledged to their sovereign and God. Over the years the code would vary until it became more formalized into what it used in today's modern military. Although we no longer pledge to slay the infidel as Christian knights did, we swear to protect and defend our country and its constitution. We all live in groups with rules, written and unwritten. Even criminal enterprises have honor codes. They are a set of values or ideals that we promise or swear an oath to uphold and remain faithful to. We make commitments and undertake obligations when we agree to the principles of a code.

It is usually considered dishonorable to betray your oath although it is not ironclad. In the U.S Code of Military Justice, the soldier also has a duty to disobey an unlawful order. Atrocities and heinous acts have been committed during conflicts with the excuse that a person was just following orders. That justification was often used during the Nuremberg Trials after World War II. So faithfulness doesn't require that we blindly adhere to the rules but apply thought or reason in determining if it is appropriate in a given situation.

What better representation for fidelity than the dog? Pictured in the sky as Canis Major, a dog will even show devotion to a person of the lowest moral character and protect them with their life. This altruism is often reflected in the bonds engendered by those serving together in combat or under adverse conditions and in parents towards their children. A dog may lack the discernment we have regarding character but their selflessness is, without question, honorable.

The U.S. Military has many elaborate toasts used on various occasions but all of them end with “to the President of the United States”. When I asked a graduate of one of the military academies once how they felt toasting a President they may not respect, the answer was that they were toasting the Office and not the person holding the Office. Loyalty can sometimes go too far and turn into fanaticism when we give our unquestioning fidelity to an individual instead of to a set of ethics or ideals. “To thine own self be true” cautions us to know and remain faithful to our own personal code of conduct, one that must always incorporate the interests of others.





sents the worshiping and serving of Deity—for to the dog his master is God” (22, 1922 ed). This Libra decanate of Gemini contains important elements for our consideration: love and marriage from Venus, ruler of Libra, and then from Mercury there are the **thoughts** of the **unconscious mind** and the **objective mind**.

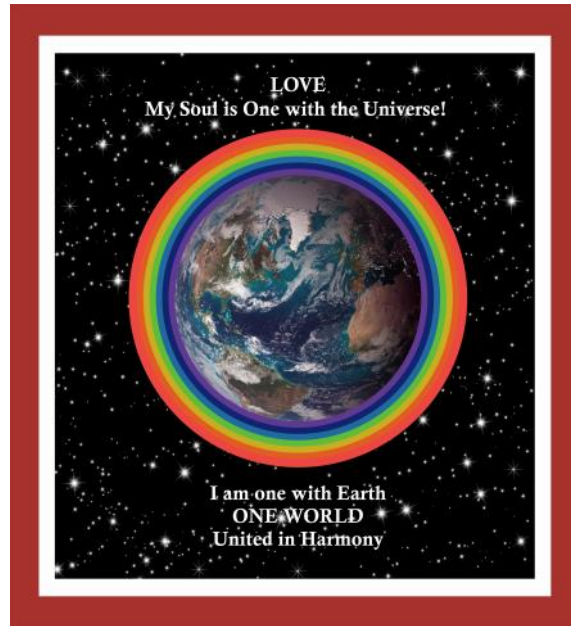
Canis Major is the faithful dog who sits between the first and third decanates of Gemini as their guardian and guide.

Anyone who has had the good fortune to have a close relationship with a dog will attest to the very special bond which exists between a good dog and a good master. I had one of these dogs, named for this very decanate. He was commonly called Major, and as Zain describes, was one of those special animals who constantly kept his big eyes on us, attending to our welfare with great devotion. He was trusting, faithful, gentle, vigilant and a lovely soul.

This practice of complete devotion and complete trust is what is needed to surrender pride and selfishness to the principles of love and service. To be able to grow our spiritual bodies, selfless love and devotion for the highest manifestation of Life, Light, and Love must be developed and practiced. Whatever this is

called is personal. For me it is the Eternal Spirit of Life, Light, and Love in all its manifestations. This work — to love and serve this energy and humanity — brings forth the best of our natures, nurturing our highest vibrations and helping to build our spiritual bodies.

On a mundane level, the Libra decanate can represent marriage, and the opportunity to attract a loving and loyal partner. On the spiritual level we seek to become our own beloved by understanding our life path as well as possible to become a loyal participant in the work of Universal Welfare. Character is defined here as the fusion between the uncon-



scious and the objective minds, intuition, and reason. This big dog reminds us of the importance of building character marked by faithfulness, unconditional affection, and kindness of devotion toward others to grow well in body, mind, and spirit.

Just as the faithful dog barks to warn its master of danger, this decanate is the voice of conscience warning us when there is something out of balance in our lives, whether it is in body, mind, or spirit. It is this niggling feeling, the slight feeling of unease, the moment when intuition and reason come together to give us the thought that something may be

(Continued on page 5)

“There are only two ways to live your life. One is as if nothing is a miracle. The other is as if everything is a miracle.”

— *Albert Einstein*

wrong in our surroundings, in our bodies, in our minds, and in our spirits. Acting against these warnings, ignoring them, weakens the character leading to a disintegration of values, loss of focus, and the return to our base selfishness and ego-centric behavior. This is a dire admonition.

It takes very little to lose strength of character in self-interest. Maintaining FIDELITY (faith), trust, and devotion to an ideal, a selfless cause, a philosophy of life, keeps us on the track of growing our spiritual bodies and our lives as the kind of humans who practice love and tolerance in every aspect of life: physical, mental, and spiritual.



Photo by yx b: <https://www.pexels.com/photo/silhouette-of-howling-dogs-statuettes-on-the-roof-during-sunset-7440455/>

In the early 1930's or before, Zain wrote the last five paragraphs of this section on Canis Major in the book *Spiritual Astrology* (p. 79, 1997 ed.). They are chilling, prophetic, and appropriate for us to study today as we consider our life paths, the future of ourselves, our country, and our world. There are consequences. It is a choice we make daily about how we will live our lives. The fact that you are here reading this, that you have chosen this path of love and tolerance, fidelity, and devotion to this "higher thought and nobler purpose" speaks volumes.

We have such a blessed opportunity to make an impact and a difference in the

world by our use of all our tools, especially our insight and intuition.

The barking dog is the voice of conscience and of reason, telling us to remain faithful to the facts of our Hermetic Philosophy, and to the divine force of life that lives in us all. We cannot lose sight of this eternal struggle for our own souls and for the soul of our planet and all its residents: animal, vegetable, mineral.

Our characters define the impact we have each day for a lifetime of days. Choose wisely.

"This Above All; To Thine Own Self Be True; And It Must Follow As the Night the Day, Thou Canst Not Then Be False to Any Man." Wm. Shakespeare

So Shall It Be!

References:

C.C. Zain. *Spiritual Astrology* (VII). Albuquerque NM: Church of Light Press. 1997

C.C. Zain. *Delineating the Horoscope* (X-I). Los Angeles CA: Church of Light Press. 1922.

Copyright 2022, Mountain Crone, Edcouch TX



"When a child is locked in the bathroom with water running and he says he's doing nothing but the dog is barking, call 911."

— Erma Bombeck



Gemini Libra— Canis Major

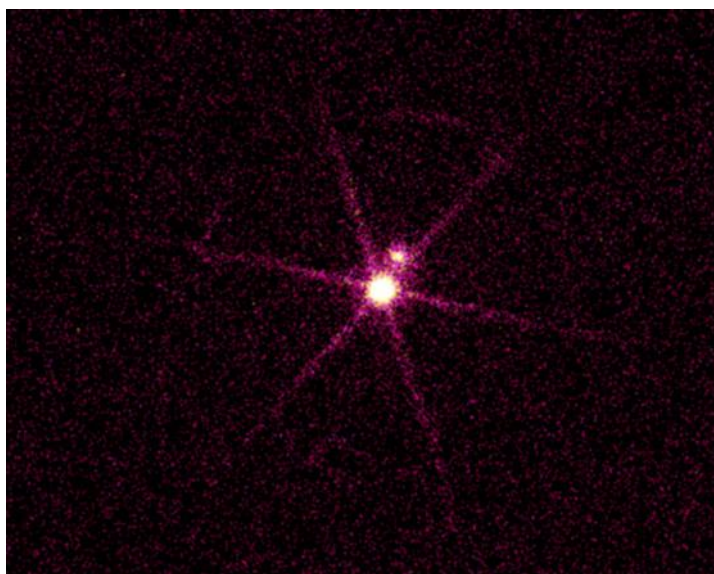
(continued from page 1)

in their influence to the signs themselves. Similarly, in interpreting and explaining the symbolism of each decanate, they nearly always relate back to their mother sign in terms of their overarching value and meaning. If you will recall, as the third sign of the Zodiac and as the first Air sign, Gemini is archetypically the sign of the mind. It communicates the ancient conception of the mind as dual in nature (i.e., rational, conscious mind and intui-

is not one star but rather two (Howell, 2022). This phenomenon, which was only discovered in 1862, begs the question as to just how detailed an understanding of the skies our Ancient Brothers and Sisters possessed. It is certainly intriguing that the central decanate of the sign of the Twins, Gemini, highlights a binary star system, where each star depends inextricably on the gravity and behavior of its complement.

“In this universe, and this existence, where we live with this duality of whether we exist or not and who are we, the stories we tell ourselves are the stories that define the potentialities of our existence. We are the stories we tell ourselves.”

— Shekhar Kapur



Sirius A and B: A Double Star System In The Constellation Canis Major (<https://chandra.harvard.edu/photo/2000/0065/>)

tive, unconscious mind), and details the essential relationship between our thoughts, feelings, and behaviors.

Accordingly, all three of the decanates found within Gemini elucidate important aspects of the mind. The second decanate of Gemini is called *Canis Major*, which translates as “The Greater Dog” (Merriam-Webster, 2022a). Importantly, the brightest star in the entire heavens, Sirius, is also found within this constellation. Still more amazing, Sirius

In terms of its mythic message, given *Canis Major*’s centrality in the third sign of the zodiac, we can also expect that it will possess a centrality in terms of its main meaning regarding the mind. The keyword for *Canis Major* is “Fidelity”, which can be alternatively expressed as allegiance, devotion, faithfulness, or loyalty (Merriam-Webster, 2022b). In all cases, we are here concerned with the absolute, utter, and

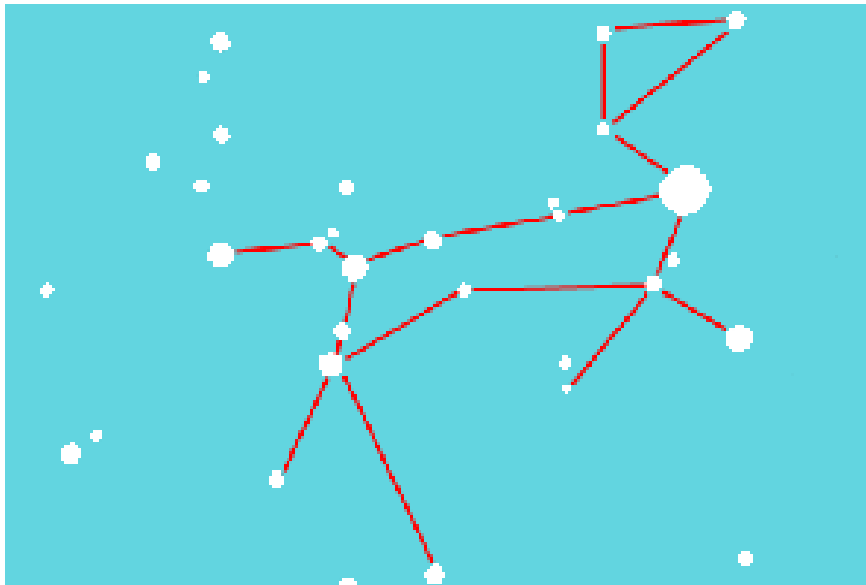
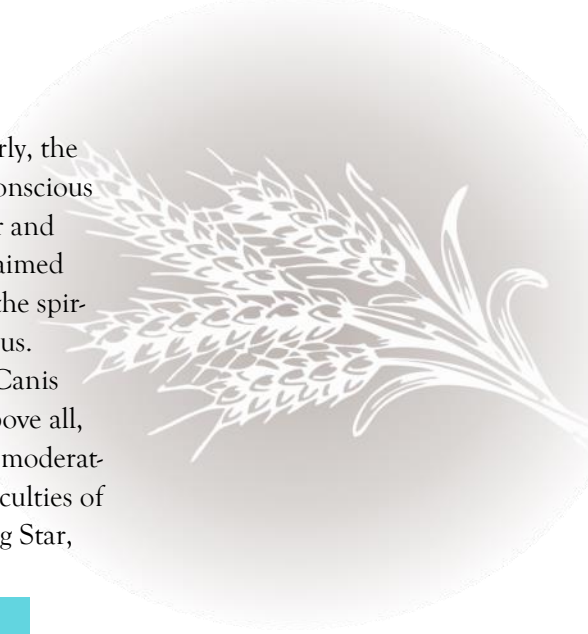
complete dedication of a dog to its owner. In *Spiritual Astrology*, Zain (1997, p. 78) observes that “As man looks up to God in service and devotion so does the faithful dog look up to man. No other animal habitually displays these qualities which in their fuller bloom become the flowers of religion and altruistic action.” Hence, just as man’s best friend is unconditionally loyal to his owner, even unto the point of sacrificing his life in defense of the latter’s cause, so we in humble ser-

(Continued on page 7)

vice and devotion to God can emulate the loyalty, fidelity, and constancy which dogs so perfectly epitomize.

Given the elucidations of the other decanates of Gemini, *Ursa Major* and *Minor*, which elaborate upon the mental faculties with which human beings are be-

erished by their increase. Similarly, the intuitive intelligence of the unconscious mind may also be used to gather and harvest information, but if it is aimed toward selfish aggrandizement, the spiritual effect will be duly deleterious. Therefore, the interposition of *Canis Major*, the sign of loyalty and above all, character, plays a crucial role in moderating and governing the mental faculties of reason and intuition. As the Dog Star,



Canis Major

https://starchild.gsfc.nasa.gov/docs/StarChild/universe_level2/star_art_solution.html
Image from World History Encyclopedia

stowed, the interposition of the dog, *Canis Major*, between these two bears is crucial. *Ursa Major* and *Minor* respectively elaborate upon the mental faculties of reason and intuition. These are the two primary psychic processes through which human beings come to observe, interpret, and understand their world. However, just like any set of tools, these capacities may be used for good or for ill. One may reason on a par with Aristotle; however, if the end of the reasoning process is personal gain at the expense of others, then spiritually speaking that person is paradoxically left more improv-

Sirius, is the brightest star in the Earth's night sky (Howell, 2022), we ourselves shine most brightly when the moderating effect of high character guides and governs our reasoning and intuitive intelligences. Put another way, just as the caring canine acts as a sentinel, loyally guarding and protecting his family, so too does conscience and good character defend us from the perils of spiritual corruption and base selfishness.

Character is defined as "the mental and moral qualities distinctive to an individ-

(Continued on page 8)

"Your worst battle is
between what you know
and what you feel."

— Anonymous



(Spiritual Astrology: Canis Major – GREATER DOG
Continued from page 7)

ual” (Google Dictionary, 2022). In analyzing this definition, we must look most to the words “mental” and “moral.” Our mental abilities of reason and intuition allow us to access information on the outer and inner planes, respectively. However, whether we do so with a moral or immoral outlook makes all the difference in the impact upon our soul. To be sure, character is one of the most enigmatic, yet essential aspects of a person. As with other psychological concepts, character cannot be directly measured, but only indirectly assessed through an evaluation of a person’s behaviors (Locke, 2021). Yet, we would be well advised to seek and maintain the company of people of good character, and to assiduously avoid those of low or questionable moral character. The former will augment and uplift, while the latter will diminish and may even imperil. Furthermore, as character is an inner, psychological trait, it

cuts across race, sex, gender, socioeconomic status, or any other external characteristic of a person. That is, one absolutely cannot assess character by examining these external traits. Instead, to regard character, which Zain (1997, p. 75) describes as “the real human, the whole human,” we must look to the way a person interacts with others. If we are careful observers, we will be able to look beyond our differences to the similarities that unify us in our devotion to Deity.

The leading text for Canis Major is

*“This Above All; To Thine Own Self
Be True; And It Must Follow As the
Night the Day, Thou Canst Not Then
Be False to Any Man.”*

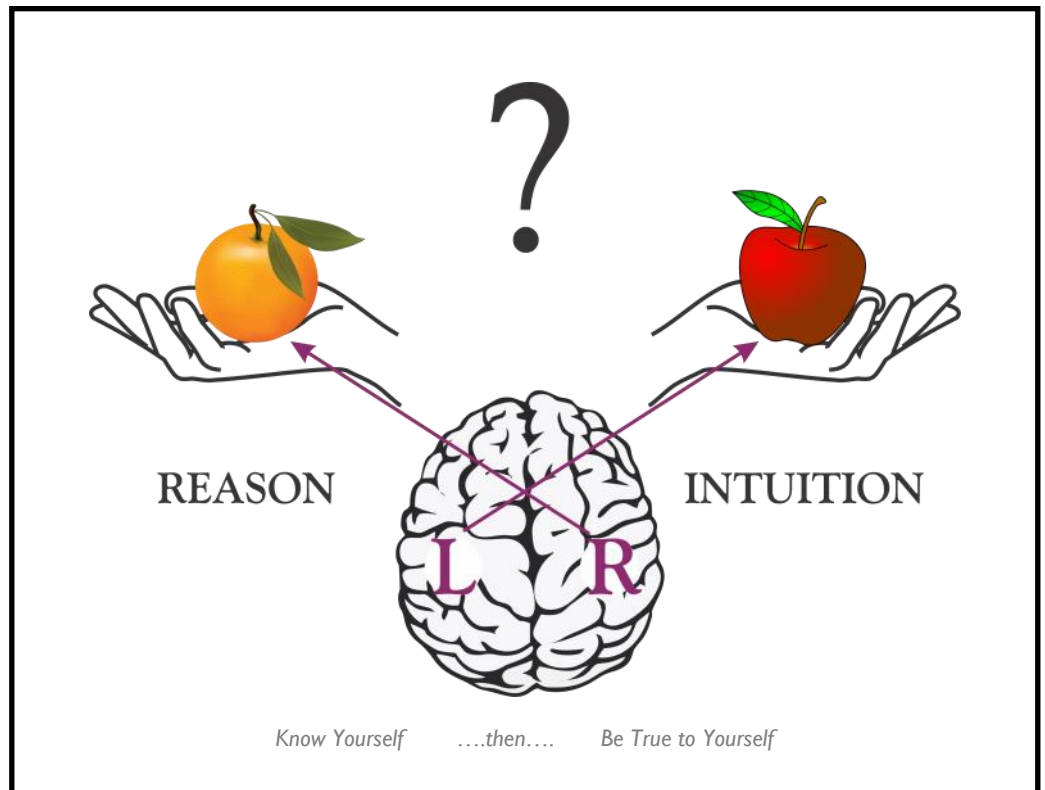
Wm. Shakespeare

The Greater Dog admonishes us to apply our mental faculties of reason and intuition not only for our own aggrandizement, but in faithful, obedient service to

(Continued on page 9)

*“Follow your heart and
intuition. They somehow
already know what you truly
want to become. Everything
else is secondary.”*

— Steve Jobs



(*Spiritual Astrology: Canis Major – GREATER DOG*
Cont. from page 8)

God and His Creation. Then our accomplishments enrich our spiritual endowment, and profit not only ourselves but our whole world.

References:

Canis Major. (2022a). Merriam-Webster. Retrieved August 6, 2022 from <https://www.merriam-webster.com/dictionary/Canis%20Major>

Character (2022). Google Dictionary. Retrieved August 6, 2022 from https://www.google.com/search?q=character+definition&rlz=1C1GCEU_enUS1014US1014&oq=character+de&aqs=chrome.3.69i57j0i433i51214j0i131i433i512j0i433i51212j0i51212.4504j0j7&sourceid=chrome&ie=UTF-8&safe=active&surl=1

Fidelity. (2022b). Merriam-Webster. Retrieved August 6, 2022 from <https://www.merriam-webster.com/dictionary/fidelity>

Howell, E. (2022, January 27). Sirius: The brightest star in earth's night sky. Space. <https://www.space.com/21702-sirius-brightest-star.html>

Locke, R. (2021, November 18). 10 proven ways to judge a person's character. Lifehack. <https://www.lifehack.org/articles/communication/10-proven-ways-judge-persons-character.html>

Zain, C.C., (1997). *Spiritual astrology: The origins of astro-mythology and stellar religion*. The Church of Light.



*“Find out who you are and
do it on purpose.”
— Dolly Parton*



From the Archives...

The Spiritual Teachings of Astrology

Anonymous

*Church of Light Quarterly
Vol. 25, No. 2, April 1952*

In ancient times there were families which, generation after generation, specialized in cultivating what is now known as extrasensory perception. And even as today those who specialize in material science have gained tremendous knowledge of the outer plane, and how to use physical energies, so those people who specialized in developing extrasensory perception and used it to learn about inner-plane energies and the origin, development, and destiny of the human soul, gained great knowledge of such things.

That they might not be lost to future generations – as ordinary language changes rapidly from race to race and from century to century – these ancient wise men recorded their findings in the language of universal symbolism, which anyone, no matter what his race or arbitrary language may be, can with a little study understand. They used the stories of sacred literature, the pictures of the sacred tarot, and the designs of the 48 ancient constellations in the sky through which to convey to generations to come, in this language of universal symbol-

ism, the more important things which they discovered.

There is no implication here that their ideas should be accepted merely because they thus recorded them. But because so many of the things they discovered and thus set forth have been proved through modern scientific research to be accurate, it does seem advisable to test as many of their findings as possible, and to accept those that are found to be factual, and to reject those – if such are found – that can be disproved.

They held that the soul is differentiated for the purpose of being educated to become a workman in God's Great Evolutionary Plan, and that to learn how to handle the chemicals of higher forms of

“In very ancient times of human evolution upon earth, humanity's revelation in word and sound was not differentiated in song and speech, but they were one.”

— Rudolf Steiner



William E. Weiss, Buffalo Bill Historical Center Collection

(Continued on page 11)

(From the Archives...Continued from page 10)

life – secretion and assimilation depend upon such Selectivity – on the physical plane it first had experiences in the mineral kingdom. Then to gain Sensitivity it had experiences in the vegetable kingdom. Experiments by modern scientists prove that plants do react to stimuli in a similar manner, but in less degree, than do animals possessing a nervous system. To develop Simple Consciousness, it had to have experiences in the animal kingdom below man. And to possess Self-Consciousness, which is essential effectively to understand what is perceived by extra-sensory perception, which is the only avenue of acquiring knowledge after life on earth is done, and the possibilities of which are infinitely greater than those of the methods commonly used on earth, it had to be born into human form. And to be able effectively to use psychokinesis, which is the only avenue of accomplishment after life on earth is done, and the possibilities of which are infinitely greater than those of the methods commonly used on earth, it had to be born in human form.

... Such a brief resume of the evolution of the soul, as taught by those who traced

the ancient, pictured constellations in the sky is necessary as a prelude to their spiritual teachings of astrology. And certainly, there is ample room even in the physical cosmos for competent workmen. Extra-galactic nebulae are other universes. In 1949, when Brotherhood of Light Course XII-I Evolution of Life, was published, we could report only the number

of such universes as could be observed by the 100-inch telescope on Mt. Wilson – between 50 million and 100 million. But now, with the 200-inch telescope on Palomar Mountain, the observable cosmos has been extended. No limit has been found, but it is reported that as many universes other than our own can now be observed as there are people on the earth – over 2 billion [7.753

billion in 2020—datacommons.org]. And the physical cosmos is but one level of an infinite number of levels on which life can exist and perform its functions.

Each of the 48 ancient constellations expounds, in the language of universal symbolism, a highly important teaching. This teaching has been condensed as a spiritual text and is given in association with each of the 48 constellations pictured the 12 zodiacal signs and 36 deca-

(Continued on page 12)



"Most powerful is he who has himself in his own

power."

— Seneca



(From the Archives...Continued from page 11)

nates, in Course VII, *Spiritual Astrology*. The teaching expounded by each zodiacal sign and decanate is now being written as a condensed lecture of about 10 minutes length by Elbert Benjamine and will be published in *The Rising Star*. The first two of these lectures – each can readily be expanded into a lecture of an hour's duration – *The Esoteric Significance of Aries*, and *The Esoteric Significance of Taurus*, will appear in the March-April 1951, issue of *The Rising Star*. Each of the signs will then follow in their regular sequence, and next year the first decanate of each sign, the following year the second decanate of each sign, and the subsequent year the last decanate of each sign, will thus have its esoteric significance explained.

The soul makes its best progress through cooperating with God's Great Plan and striving to assist in its realization. And to do this it needs to use its capacities and energies constructively.

In any worthwhile organism or organization there are various cells, organs or individuals which perform different functions. All do not do the same job, but each has its own work to do. And it is trained to do this work. Specialization, division of labor, and cooperation be-

tween parts which perform different functions is the very foundation of a successful business enterprise or a successful biological organism. And it is logical to conclude that the cosmos operates in a somewhat parallel manner.

Thus, souls were not differentiated to perform identical functions, but to do a special work as cosmic workmen. And their training is such as to fit them to perform the type of work for which they



Cosmic Workers in Training

Copyright a href='httpswww.123rf.comprofile_viesinsh'viesinsha

were brought into existence.

When the astrological currents, which constitute the inner-plane weather, coincide with the thought-cell organization of the soul, each important thought-cell group gains new energy from these currents, and its psychokinetic power is correspondingly increased. This non-physical power, which can move physical objects and bringing about physical conditions, enables the child at that moment to be born. Thus, the astrological positions at that moment are an accurate map of the

(Continued on page 13)

“The greatest step forward in human evolution was made when society began to help the weak and the poor, instead of oppressing and despising them.”

— *Maria Montessori*

(From the Archives Continued from page 12)

power of each group of thought-cells, and their organization, within the soul.

As the soul is being trained to perform a given function in the cosmic scheme, its natural aptitudes when born into human form, and its general characteristics, indicate the schooling it has had in its evolutionary past, which in turn gives knowledge of the type of ability and characteristics it is being trained to use – on planes and in ways that are beyond human comprehension – in its eternal progression after life on earth is done.

The more powerful a planet is in the birth-chart – the more astrodynes it has – the greater the psychokinetic power of the thought-cells thus mapped. And our statistical research has conclusively demonstrated that the most powerful planet in the birth-chart – the one with the most astrodynes – indicates the natural aptitudes that can most easily be developed, and that can be developed into the greatest ability. The next most powerful planet in the chart maps the type of natural aptitudes that can be developed next most easily, and into the next greatest ability. Thus, the most powerful planet in a chart, quite aside from its harmony or discord, indicates the chief type of ability the soul is being trained to use in the cosmic plan, and the chief type of ability the individual can use while on earth most to benefit himself and to be of use to humanity.

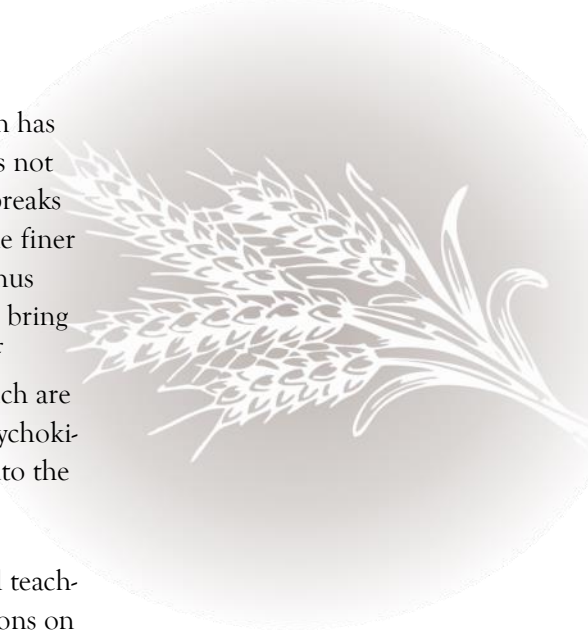
In using this type of ability, not only should it be used constructively, but it should be used in association with physical conditions which radiate inner-plane vibrations which add to the psychokinetic power of a group of thought-cells which is harmonious, and thus mapped

by a planet in the birth-chart which has strong harmonious aspects. Luck is not fortuitous. Good breaks and bad breaks are the result of thought-cells in the finer form which are harmonious and thus using their psychokinetic power to bring fortunate events into the life, or of thought-cells in the finer form which are discordant and thus using their psychokinetic power to bring misfortune into the life.

Both the material and the spiritual teachings of astrology also give instructions on how to change the desires of the discordant thought-cells so that instead of using their psychokinetic power to bring misfortune they will use it to attract good fortune. The fortunate individual not only can do more for himself, but also do more to benefit humanity.

Furthermore, it instructs how best to use the characteristics of each sign and planet constructively. It is an impossible task to divert Mars energies to express Saturn attributes, or to cause Aries characteristics to express in a manner characteristic of Libra. But a destructive Mars energy can easily be diverted into constructive Mars channels, and a destructive Aries characteristic can with a minimum of effort be diverted to express a constructive Aries characteristic. The spiritual teachings of astrology instruct the individual how to raise his dominant vibratory rate and thus increase his spirituality, how harmoniously to reorganize his thought-cell organization, how to choose the kind of information he specially should seek, and, as mentioned, how to select the type of know-how he should develop. And it also teaches that all thoughts and actions should be constructive and have for object universal welfare.

(Continued on page 14)



*“The fault dear Brutus, is
not in our stars, but in
ourselves.”*

— William Shakespeare



(Continued from page 13)

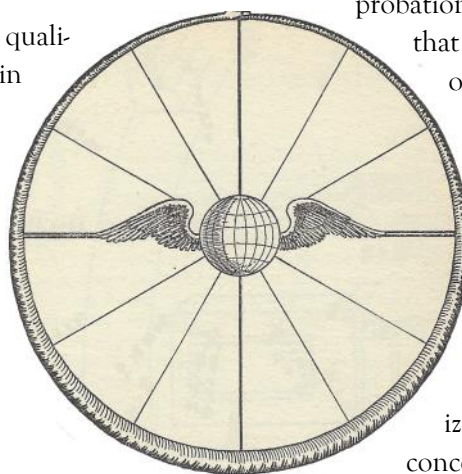
Very briefly to indicate the discordant tendencies of each sign and planet, and the harmonious channel through which this energy readily can be caused to express, a person ruled by each sign and planet will here be mentioned.

ARIES: His worst quality is officiousness. His desire for leadership causes him to interfere in the affairs of others when he should not. He should learn, therefore, instead of diffusing his energies, to concentrate his powers of leadership to the chosen field of his endeavors.

TAURUS: His worst quality is obstinacy. Early in life, therefore, he should form the habit of being steadfast toward truth and justice. When this attitude is entrenched it will not be difficult for him to give way in smaller things.

GEMINI: His worst quality is changeableness. Often, he talks too much. He can do any number of things well, but instead of changing occupations he should change his methods in the one he has chosen.

CANCER: His worst quality is touchiness. He should, therefore, absorb the idea that people in general are sympathetic and friendly, and that those who are otherwise are not worth bothering about. Then he will not refuse opportunities when they are presented to him.



LEO: His worst quality is domination. He should early realize that to get others to do as he desires, instead of giving orders he should use kindness to get cooperation, and that he should have a position of importance only when he is capable of efficiently filling it.

VIRGO: His worst quality is criticism. To be at his best he should early realize that it takes just as keen discrimination to find good points in people and in things as to find those objectionable, and that this is even more profitable information when applied.

LIBRA: His worst quality is love of approbation. He should early learn that he will be better liked by others in the long run if he has the character to render firm decisions and to be uninfluenced by flattery.

SCORPIO: His worst quality is troublesomeness. He should early realize that his advantage is in concentrating his energies on the solution of his own problems, and in overcoming the obstacles to his success, rather than insisting upon the proper conduct of others.

SAGITTARIUS: His worst quality is sportiveness. He lives at his best when he has found a work in life so interesting to him that it becomes a game in which success is the hazard.

CAPRICORN: His worst quality is deceitfulness. He should early realize that the greatest advantage any person can have is integrity of character and devotion to the welfare of others.

“Every evil has its good, and every ill an antidote.”
— *Dorothea Dix*

(Continued on page 15)

(Continued from page 14)

AQUARIUS: His worst quality is argumentation. He frequently takes the opposite side of a question merely for the sake of discussion. He should learn that wisdom must be accompanied by practical application if it is to accomplish anything worthwhile.

PISCES: His worst quality is worry. He is at his best when working in the spirit of universal brotherhood. Being deeply religious, he should realize that he is responsible only in so far as he has ability, and that he should trust Deity with the other details.

SUN: His worst quality is dictativeness. He needs early to learn that undue assumption of superiority really weakens his authority and that consideration of the opinions of others and sympathy with their views will tend toward getting better service.

MOON: His worst quality is inconstancy. He should early learn that if he is to achieve fame, or to be favorably known by the public, he must cultivate the power to persist in some one endeavor to the point of exceptional ability.

MERCURY: His worst quality is restlessness. He should learn from the fable of the tortoise and the hare that the race is not always won by the swift. Also, that the highest form of expression of his mentality can be attained only through protracted concentration.

VENUS: His worst quality is pliancy. He is entirely too desirous of pleasing others and in finding the line of least resistance. He should early realize that he more often truly pleases when he asserts strength of character.

MARS: His worst quality is harshness. He should early realize that there is greater satisfaction building up than in tearing down, and that undue severity and antagonism hinder constructive enterprise. There is more opportunity for initiative in fighting disease, ignorance and poverty than in combating any human foe.

JUPITER: His worst quality is conceit. He should early realize that Deity permitted others than himself also to have correct opinions, and that true charity demands that he give them due consideration.

SATURN: His worst quality is selfishness. He will abandon trickery when he realizes that honesty is the best policy. His energies should be devoted to efficiency, system and organization that benefit others as well as himself.

URANUS: His worst quality is eccentricity. He early should learn that conventional action and moderate views in most things will enable him the better to impress others with the sanity of essential reform.

NEPTUNE: His worst quality is vagueness. He dislikes the mental labor of critical analysis. He should early learn that the only valuable ideals are those which can be made practical.

PLUTO: His worst quality is inversion. He is never milk and water in what he does, and if occasion demands does not hesitate to use violence. Instead of using coercion, he should early learn how to cooperate with others for purposes that are beneficial to mankind.



"Astrology is like a weather report; it tells you what conditions you're likely to face in the future. If the weatherman says it's probably going to rain, you bring an umbrella. If you follow that advice, you won't get wet.."

— Lee Goldberg

Membership Room

Conference 2022



Veiga, Ruben and MaryMeg



Vicki and Paul



Aurelio, Alan, Carla, Paul and Mark



Erin, Carla and Candace



Janet

Jody and Ruben



Errick



Yvette and Eeve



Theodore



Gloria



Our masked man... Paul



Phil



Misty and Rebecca



Calling the Spirits: Veiga, Mark, Rebecca and Alan



Sharon



Vanessa, Yvonne A and Yvonne B



Candace, MaryMeg and Erin



Radine

Thank you Veiga and Sharon for taking and sharing conference pictures!

Congratulations to Our Newest ...



HERMETICIAN

Joseph Miller



The Church Of Light YouTube & AHA Facebook Pages

The Church Of Light YouTube channel is primarily devoted to interactive learning of hermetic astrology and the tarot. We are a non-profit organization, since 1932, dedicated to religious education...

<https://www.youtube.com/c/thechurchoflight/>
<https://www.facebook.com/academyofhermeticarts/>

"You are not a drop in the ocean. You are the entire ocean in a drop."

— Rumi

The Academy of Hermetic Arts is Open!

The Brotherhood of Light Lessons
in an interactive, online environment.

Courses 1 thru 10 are available now. One new course will be released in consecutive order every two months.

<https://academyofhermeticarts.org/>

Unless specified otherwise by a member, The Church of Light Quarterly is mailed to all domestic members who donate a minimum of \$50 annually and \$75 annually for international mailings.

Current Quarterlies are found at: <https://www.light.org/quarterly.cfm>

Archived versions are found at: <https://www.light.org/archives.cfm>



THE CHURCH OF LIGHT

2119 Gold Avenue SE
Albuquerque, NM 87106

*Where Science and
Religion Are One*

The Church of Light Vision For the 21st Century

OUR MISSION:

To promote Universal Welfare and the exaltation of humankind through the teaching and practices of the Religion of the Stars as outlined in the writings of C.C. Zain.

GUIDING PRINCIPLES:

A loving Cosmic Intelligence, of which we are all a part, whose infinite goodness guides us through undeviating natural law.

A Divine Plan manifests through progressive evolution in which each soul has a unique and important role.

A soul is completely moral when to the maximum extent of its abilities it adheres to the universal moral code: Contribute Your Utmost to Universal Welfare.

The realization of the soul's Mission and the attainment of Self-Conscious Immortality is the goal toward which each soul moves.

Love is the way to life. Unselfish Love alone makes immortality possible.

Through the proper exercise of one's mentality using Directed Thinking and Induced Emotion, it is possible to control one's own life and destiny, both here and hereafter.

Astrology is the Golden Key that unlocks the door to understanding the Soul's true character and potential.

The safe development of extrasensory perception (Extension of Consciousness) is the best tool for realizing each individual's mission in the Divine Plan and for verifying the survival of the soul after death of the physical body.

Religion is the sister of Science, and it evolves by incorporating new information as it is discovered and verified.

OUR VISION FOR THE 21ST CENTURY:

We are a powerful force for good and for spiritual enlightenment and expand the reach and experience of our members because:

We provide reliable and verifiable information regarding the nature of the soul and its relationship to Deity and other life forms;

We seek out reliable and verifiable information regarding life on higher planes of existence, especially in regard to the transition we call death and the nature of the next life;

We develop increasingly advanced tools and training in astrology, extrasensory perception, directed thinking and induced emotion toward the end of maximizing each person's happiness, usefulness and spirituality;

We promote the importance of the four essential freedoms: Freedom from Want, Freedom from Fear, Freedom of Expression and Freedom of Religion;

We build a sense of community and spiritual purpose which uplifts and inspires our members to Contribute Their Utmost To Universal Welfare.