



The Silver Key

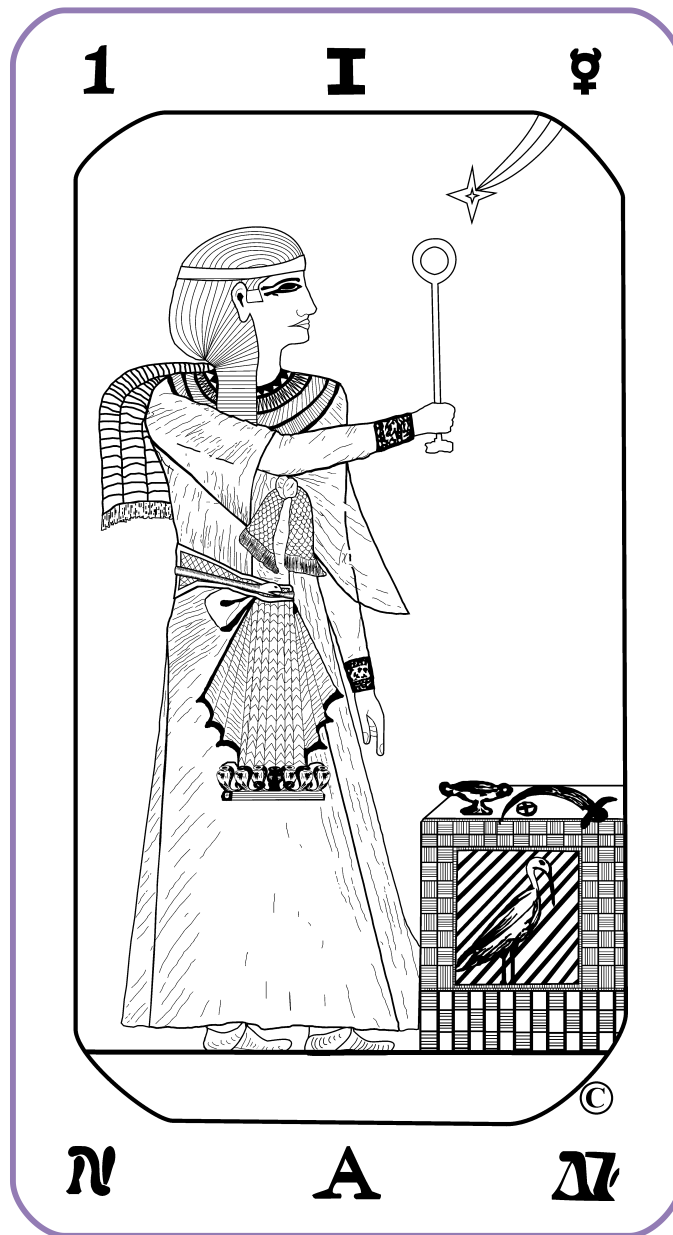
## The Astrological Significance of Each Egyptian Tarot Card ... Part II

Elbert Benjamine

Reprint from the February 1937 *American Astrology Magazine*

The ancients, even as we do, considered man's ability of mental expression his most important and distinctive attribute. Therefore had they permitted their imaginations to select a planet which should have rule over this most significant influence in the life of every man, undoubtedly they would have chosen some conspicuous orb such as Jupiter or Venus. In any artificial system of correspondences they would not have chosen as representing ability to think, a planet so inconspicuous that it is seldom seen with the naked eye.

For short periods of time near its greatest elongations Mercury can be discerned low down in the twilight, appearing like a first magnitude star. The best time for observation is in the evening when eastern elongations occur in March or April. Elongation means greatest angular distance from the sun; and Mercury is so close to that brilliant orb that it can only be seen just before sunrise when it is



near its greatest western elongation, and just after sunset when it is near its greatest eastern elongation. The days on which these greatest elongations occur are noted in the common ephemeris under "phenomena." This year, for instance, on February 7 it is in greatest western elongation; and can then be seen just before sunrise; and on April 20 it is in greatest eastern elongation and can then be observed in the evening just after sunset; although the conditions for viewing it near these dates are not exceptionally favorable.

Of all the orbs within the olden septenary Mercury, by far, is least conspicuous and most difficult to observe, and thus the least likely to be selected in any imaginary system as playing so important a part in the affairs of men. We must believe, therefore, that those who gave it rule over thought and mental expression, did so rather reluctantly, and only after a vast amount of observational research had convinced them that it has the precise influence which

Continued Page 5

***Summer Issue 2001***

ISSN: 009-6520  
Vol. 76, No. 3

**PUBLISHED BY**  
*The Church of Light*

**EDITOR**  
*Paul Brewer, President*

**TYPESET**  
*Vicki Brewer*

**CIRCULATION**  
*Dorothy Fast Wissler*

The Church of Light Quarterly is the official publication of the Church of Light. It includes educational and inspirational supplements to The Brotherhood of Light Lessons.

There are four issues per year: Winter, Spring, Summer and Fall. Please address all communications to:

The Church of Light  
111 S. Kraemer Blvd. Suite A  
Brea, CA 92821  
tele: 714 255-9218  
fax: 714 255-9121

**Directors:**

Paul Brewer, President  
Doris Chase Doane,  
President Honoraria  
Margaret Joscher, VP  
Vicki Brewer, Secretary  
Donald Baker, Treasurer  
Dave Carrothers, Nevada  
Angelo L. Chirban, MD, Phoenix  
Dorothy Fast Wissler, California  
Paul Klamer, Toronto, Ontario,  
CANADA  
Julia Goldstein, Canberra ACT,  
AUSTRALIA

**Honorary Directors:**

Allan Curthoys, New York  
Christopher Gibson, New Mexico

**For Quarterly Submissions:**

If you wish to submit material to the Quarterly, please write or call for guidelines.



*Inside this issue ...*

***The Astrological Significance of Each Egyptian Tarot Card...Part II, Arcanum I***

*Elbert Benjamine*

***Editorial: Mercury***

*Vicki Brewer, Hermetician, Minister*

***Are We More Than Half Civilized?***

*Elbert Benjamine*

***Endocrine Gland Update***

*Angelo Chirban MD, Hermetician, Minister*

***From Whence Come the Energies of Progressed Aspects***

*Elbert Benjamine*

**Plus ...**

*Membership Room*

*Stellarian Honor Guard*

Editorial

## *Mercury*

Vicki Brewer, Hermetician, Minister



“Great men are they who see  
that spiritual thought is stronger than any material force,  
that thoughts rule the world.”

—Ralph Waldo Emerson, *Progress of Culture*

Like Mercury, the fleet footed messenger of the Gods, the nervous system carries messages to and from the brain to other parts of the body. The process is so perfect that most are unaware of the information flowing through this vast, life supporting network. Like quicksilver, it flows unfettered through the nervous system until something captures the attention or consciousness. It is then that awareness dawns in the form of THOUGHT or PERCEPTION. With practice, in these moments of consciousness, magic can happen. Unlike our brothers and sisters occupying lower levels of the evolutionary chain, humans have earned the potential to exercise free will through self awareness. They can consciously direct the expression of Will — the Divine Spark. With the capacity to travel between the animal and executive functions, the messenger Mercury is able to call upon INTENTION to mobilize the physical and mental energies of the body. Magical forces are brought into being.

Mercury’s nature is intellectual and, most importantly for newly Self Aware humans, it is convertible, flowing through the harmony/discord, positive/magnetic/negative qualities in the form of associations that are kept. The importance of being convertible lies in the realization that by choosing the associations (emotional, intellectual and spiritual) each person becomes the Magician and Creator of their own life by learning to channel the currents of energy into desired directions and purposes. Bridging the differences between physical, mental and spiritual bodies...THOUGHT is the means by which we may become fully integrated and empowered individuals. Mercury’s best quality is EXPRESSION and the worst quality is RESTLESSNESS.

While the lessons are filled with many techniques—astrological, alchemical and magical—for taking charge of one’s own destiny, it is always good to look anew. Featuring

Arcanum I in this issue creates the opportunity to view the Mercurial functions.

Course II, *Astrological Signatures* teaches that each sign is a sounding board and that each planet is a tone. Tone “C” is always the same but resonates on the soundboard of a violin differently than a flute. Some signs (or sounding boards) transmit particular planetary tones more readily than others. Each person comes into this life with planets in particular signs...some more resonant than others. This we cannot change. Nor is it necessarily desirable to do so when viewed from the perspective of the collective whole...diversity is the key to survival. However, we can attempt to modify behavior by learning to view “gut reactions” and conditioned responses in terms of how a planet resonates when expressing its highest qualities as well as its not so desirable qualities.

For example, Mercury in Taurus is in its INHARMONY. The natural quickness of Mercury will take on the slow, plodding and material qualities of Taurus (best quality is STABILITY and worst is OBSTINACY). It is easy to see how this is not the best medium for Mercury to function. Expressing through fixed earth, thinking and speech may be rigid and overly concerned with material acquisition. According to Hermetic Soul Science, this is the result of the conditioning of the “animal soul” (which each of us brings into this life). Nothing is inherently bad about a Taurean Mercury...however, it is not always conducive to the effective flow of ideas. Quicksilver flows into nooks and crannies where nothing else can travel. Like the metal it is associated with, the function of Mercury (or thought) is to travel into many different spaces so that new information can be processed. This is not easy for a Taurus Mercury.

Each person is capable of being in tune with and then directing the mechanical tendencies of the animal soul that sup-

ported and carried them through the evolutionary path. All that is required is a truthful picture of self (supplied by the birth chart), an appreciation of how and why you are who you are (it is no accident that you are here!) and then a clear picture of the desirable qualities to be cultivated. By lifting consciousness into the realm of objectivity anything becomes possible and anyone can “rise above”!

Becoming familiar with the Table of Essential Dignities is a terrific way to understand the nature of an energy that works in your life. Take a few minutes during the day to begin viewing yourself from the astrological perspective. For example if you have Mercury in Taurus begin to observe your thinking behavior. Is there a tendency to rigid thinking? Is there a tendency for thought to travel in the direction of the “I HAVE” attitude. Begin to extract what you appreciate about your Taurean Mercury. *Horoscope Maker and Reader* says it can be “practical and refined rather than too determined and unyielding.” Begin thinking of examples where you might want to loosen up. To do this you’ll need a picture of what Mercury looks like when it expresses through signs that are more resonant to its natural energy.

Mercury is at HOME in the sign Gemini (best quality is VERSATILITY and the worst quality is CHANGEABLENESS). Here the fleet footed messenger is free to travel within a constant flow of ideas such as are expressed in conversation or in writing. Its energy is not bound by material motives rather it is accentuated by the desire for mental expression. It is that state of development comparable to early childhood education noted for versatility of information in the form of a multifaceted curriculum laying the foundation for later development. Here the quality of PERCEPTION is like fluid air and expresses as I THINK. It is unfettered by too much emotional content and practical concerns ...these are concerns for a later day.

Mercury is so versatile that it has two homes! Its other HOME is Virgo (best quality is ANALYSIS and the worst quality is CRITICISM). C.C. Zain calls it “liquid earth”...binding together that which was gleaned in the Gemini phase of perception. Rather than a free flow of thought there is emphasis on the utility of thought...the critical faculties begin to ANALYZE how desired results may be accomplished. Here the unfettered, free flow of ideas which characterized Mercury in Gemini begin to seem immature and silly unless they can begin to be refined into a more useful product. Virgo Mercury is in a constant process of analysis which may incline toward being critical. Interestingly the two homes for Mercury are square to one another! So it is that we come to understand just how versatile the planet Mercury is. On the one hand its function is just pure exchange of information...on the other, its function is application and utility. Both are important and to be appreciated for the task they perform.

The sign of Mercury’s HARMONY is Scorpio (best quality is RESOURCEFULNESS and the worst quality is TROUBLESOMENESS). Hermetic philosophy teaches us that duality is necessary for creative expression that may result in trinity... two poles united by the bigger picture. Strange as it may seem Scorpio seems to represent Mercury’s step beyond itself into a larger possibility. Zain says that Scorpio energy “moves more with the world’s mental current than athwart its flow.” “Scorpio people have a never failing fund of ideas and resources and an abundant life giving magnetism...they make good surgeons, doctors, chemists, scientists and mechanics.” Mercurial impressions fuel its natural creativity and through Scorpio Mercury holds the potential to align itself with a higher purpose. Mercury’s free and sometimes frantic flow of energy is quieted to the point of applying the inner resources to that which is DESIRED. Mercury in Scorpio is at its best when directed to scientific endeavors because of its great capacity to penetrate the unknown and discover what lies just beyond that which is known.

And last, there is the EXALTATION of Mercury in Aquarius (best quality is ALTRUISM and the worst quality is ARGUMENTATION). In Aquarius, perceptions attain the level of “KNOWLEDGE”. The process begins with the first inkling of LIGHT that captures the attention and rises to the level of perception which can be analyzed and then debated. Occasionally an inkling can evolve into an idea that achieves the firm footing necessary to reside within the body of what is considered commonly held KNOWLEDGE and then to progress beyond. Aquarius is attributed with being inventive and scientific, pleasant, friendly, quiet, patient, determined, faithful, sincere, easily influenced by kindness, artistic, refined, having strong likes and dislikes with an interest in education and discoveries. Aquarius provides the perfect environment to foster creative and productive exchange of information and ideas. You might call it IDEA HEAVEN! Aquarius is a fixed sign co-ruled by Saturn. On one hand this may sound like bad news but when paired with Uranus the rebellious air sign it’s good news because the desire for crystallization lends a degree of solidity or stability which is required to thoroughly contest an idea. Uranus is the planet of progress and change and the one thing we can completely rely upon is change! Why is this? Because what we can know about anything is incomplete and imperfect and eventually some clever minded individual or group will figure this out! Change is required for evolution. And PERCEPTION is the beginning (and sometimes the end) of the entire process. We can count on the Aquarian Mercury to always be searching for the next best idea.

Take a look at your birth chart Mercury. Do you find that your thinking is characteristic of the sign it occupies? Next time you’re trying to solve a problem, query yourself about the nature of the problem. Try and match it with the Mercurial approach that best suits its solution. Exercising a little

mental gymnastics will stretch your imagination and increase your appreciation for all the other approaches people use. You will probably notice that most people tend to fall into their natural “groove” (some may call it a rut!). You will also observe something else...your Self Awareness

growing by leaps and bounds. Remember, if you are reading this you have FREE WILL and you can choose the type of life you want to lead by choosing the way you think. The power of thought is magic ... **THOUGHTS rule the world!** ✨

---

*Continued from Page 1*

modern astrology, through statistical studies, likewise has demonstrated.

These old time observers of the stars and students of human attributes, to express the relative qualities of the planets used one or more of three symbols in different combinations and in different positions. The circle, because like spirit it has no beginning nor end, was used to represent spiritual qualities. The sun, presenting the appearance of such a disc, was recognized to be, like spirit, the source of that energy which expresses as life. Because the moon was observed to exert so powerful an influence upon the emotions, and its phases had so noticeable an effect upon the mind, its crescent was used to represent soul, or mind. And as the earth is the place where lunar and solar forces meet, or cross, and where under the impetus of spirit the mind evolves by means of experience, the cross was used to denote that which is material.

To express the qualities of Mercury by means of a simple hieroglyphic, for instance, they placed the crescent of mind above, in a dominant position, showing it to be the guiding force. Immediately below the crescent of mind, was placed the circle of spirit. Thought ever guides and dominates the spiritual principle in man, evolving it or holding it back, as the case may be. Yet below the circle of spirit was joined the cross of matter, to indicate that material things were subservient to mind, and when Mercury's influence was dominant, of less importance than the things of spirit.

The circle, above and attached to which is a crescent and below and attached to which is a cross, quite precisely denoted in terms of universal symbolism the most outstanding attributes of the influence of Mercury in human affairs. And careful study of the implications of these three symbols thus joined to form the emblem by which this planet is indicated in the common astronomical ephemeris will bring a good general understanding of the planet's significance. But to convey more detailed information relative to the principle over which Mercury has ruled the ancients had need of something more complex than this hieroglyphic of mind and matter united by spirit. They therefore designed a picture, which should convey in a language altered not by the passing of time nor affected by race, all of importance they had discovered through countless generations of observation as to the significance in the life of man of those things under Mercury's rule. This is the symbolical pictograph now known as the first Major Arcanum of the tarot.

They had observed that before a man does anything the image of the action is present in his consciousness. Before he builds a house he makes a mental plan. And further observation convinced them that something analogous to thought preceded the activities of plants and animals; and that the thought composition of their astral bodies determined the form into which they grew, their reaction to subsequent environment, and even the type of environment which they attracted. As is plainly indicated by allocating the first tarot card — to explaining the significance of thought, the ancient wise men believed, as do most modern philosophers, that thought is number 1; that is, it is the commencement of everything. Before the light of intelligence was present, as the Bible states:

“The earth was without form, and void.” This first tarot card is called The Magus. A magus is one who practices magic, that is, who uses his thoughts to demonstrate some desired condition. This magus is standing; the attitude of will which precedes action. His robe is of white, image of purity, original or regained. And his forehead is girt with a circle of gold, symbolizing the possession of light, or intelligence.

Each emblem in the picture, and its relation to every other emblem, is portrayed thus to give some definite teaching about Mercury and the things this speedy planet rules. But the most significant teaching, here plainly stated in the language of symbolical pictograph, is revealed by the magus raising a scepter of gold to heaven in his right hand, while with his left he points the index finger toward the earth.

This scepter is raised to the proximity of a four-pointed star. The star with rays extending heavenward is the symbol of the overshadowing genius of his spiritual master directing his efforts and counseling him in his upward struggles. But even more obviously it is the symbol of those planetary forces which have so powerful an influence over the life of every man.

This magus, however, is not negatively reclining; passively waiting for what appears to be a progressed aspect to bring into his life whatsoever it commonly signifies. Instead, he is on his feet, with one of the implements signifying the four chief departments of human life raised in his right hand and the other three before him on the cube signifying the physical plane, handy to his use. In another place I will explain the origin of these four emblems which also designate the four suits of the Minor Arcana. But as they are here pictured

in the very first, or Mercury, design, their astrological significance should now be briefly stated.

The suit of Scepters (the magus holds a scepter in his up-raised hand), which in common playing cards is the suit of Clubs, symbolizes the element fire. This in human life becomes enthusiasm, ambition and enterprise. Consequently, this suit belongs to the department of life having to do with business, occupation, station, honor and profession. In astrology it is represented by the M.C. where the sun appears at noon.

The suit of Cups (a cup is before the magus on the cube), which in common playing cards becomes the suit of Hearts, represents the element water, symbol of the emotions and typical of domestic and affectional relations. It thus broadly corresponds to the western angle of a birth chart, where the sun sinks below the horizon.

The suit of Swords (such a sword lies on the cube of the physical world), which in common playing cards becomes the suit of Spades, represents the element earth, symbol of struggle, allied to affliction and death. It thus corresponds to the Nadir, where the sun is in its grave, or lowest point in the diurnal cycle.

The suit of Coins (such a coin as is on the cube before the magus), which in common playing cards becomes the suit of Diamonds, represents the element air, the breath of life. The other foods may be purchased with money and thus money has become the symbol of life itself. It therefore corresponds to the Ascendant of a birth chart, where the new-born sun each day rises above the eastern horizon.

The attitude of will which the magus in the picture plainly holds is not that of submission. Much as Benjamin Franklin's lightning rod was raised to capture the destructive lightning and conduct it harmlessly to the earth, so holds the magus aloft his scepter to act as an aerial to capture the energies plainly being radiated from the planet. But it is clear to see that he proposes to do more than merely deflect this captured planetary energy into some harmless expression. His whole attitude portrays the determination to use it in connection with the emblems representing the chief departments of his life that symbolically lie before him on the cube of the physical world.

To enable him, instead of being shoved about, puppet like, by planetary vibrations, to capture those desired and divert them into channels of his own choosing he must possess high intelligence, which is denoted by the band of gold about his head. But even endowed with such intelligence, how can any person rule his stars, as this magus clearly is pictured doing?

The pictograph explains that it is done through the use of thought; that is, through the function which is the distinctive attribute of Mercury; for the characteristic of a magus is that his work is performed through the agency of thought. It is

because mental expression is the outstanding quality both of Mercury and of a magus, that such an individual was used to depict the ancient teachings relative to this versatile planet.

Mercury rules the nervous system of man over which flow those etheric currents which carry messages to and from the brain. Dr. George Crile in his book, *The Phenomena of Life; A Radio-Electric Interpretation*, which appeared in February, 1936, gave conclusive proof that these energies are electric in nature, and constitute the vital force of life. And Dr. Edwin J. Cohn, Professor of Biological Chemistry at Harvard, revealed at the meeting of the American Chemical Society on April 12, 1936, that he had measured the tiny electrical charges which carry messages over the nerves, and had found their source of origin on the giant protein molecules, hitherto considered electrically neutral. He pointed out that the movement of such an electro-magnetic molecule is like the armature of the dynamo. It produces an electric current. By means of the electric currents thus generated the mind exercises its control over the body.

Protein molecules are able to release the high-frequency energy of the lightning which fixed the nitrogen that plant life took from the soil. This is in accordance with Einstein's Law of Equivalence: that the energy of an atom is given out in the same quanta as those received by the atom. And these short-wave radiations have properties with which we have become familiar in the radio. In fact, Dr. Cohn uses the same technical developments in the measurements of the electrical properties of the giant protein molecules that have led to the improvement of the radio.

Of all the cells in the human body, those of the nervous system, which are ruled by Mercury, are best adapted to the production of short-wave radiations, as well as to carrying electric currents. And the gray matter of the frontal lobes of the brain are best adapted of these nerve cells ruled by Mercury in this respect.

This means that, as occultists long have held, the nervous system of man is a radio broadcasting set. And it also means, because scientists have found these electrical phenomena of the nervous system to be reversible as when the cells recharge in sleep, that the nervous system is a delicate receiving set, capable of intercepting short-waves which reach it from other broadcasting sets.

Telepathy, which material science very reluctantly is being forced by the experiments of its own savants to accept, thus finds its explanation. And also thus is explained the process which the magus, pictured in the first Arcanum of the tarot, is employing to utilize the energy of a selected planet, or of a planet the energy of which reaches him because at the time it receives a progressed aspect.

Not that the ancient initiates who left to us their explanations of astrology and of life in the language of symbolical

pictograph on the tarot were aware of the modern technical explanation, which is in terms of electrical phenomena. But they, as magi, that is, as those who used the power of thought for practical purposes, came to understand how thoughts are able to tune the nervous system and the currents passing over it to the planetary energy they wished to receive; and how because its energies reached the astral body by way of the nerves in such volume, other and more discordant energies were shut out.

But to explain in 1937 scientific terminology just what Mercury, which rules the thoughts, is shown doing in tarot Arcanum I: Through his thoughts and feelings man has the ability to increase or decrease his mental and nervous tension, which means the rapidity with which the nitrogen compounds release radiant energy, and thus by controlling the comparative shortness of the wave lengths emitted, he can tune in on various levels. And as the etheric energies of the nervous system are ready transformers and conductors of corresponding astral broadcasts, he can tune in not merely on broadcasts through the ether, but on the astral broadcasts from the planets and from minds that no longer are of earth. The magus of tarot No. 1, is shown in the act of thus tuning in on such a broadcast. And as this tuning in process is accomplished through directing the thoughts, it is eminently fitting that the explanation should be thus pictured on the tarot illustrating the functions of Mercury.

In fact, whether he is aware of it or not, each individual tunes thus in on the energy of any planet that makes an aspect in his chart by progression. If he has a progressed aspect to Mars, for instance, the Aggressive thought-cells in his astral body receive, through the aerial mapped by the aspect, an additional supply of energy. Because they have more energy they can impart it to the nerves of the gonads and of the adrenal glands. This local electrical stimulation releases hormones in the blood. These reaching the cells of the body increase their electrical discharge.

These electrical discharges over the nervous system, unless there is a deliberate effort made to cultivate other thoughts, stimulate thoughts of the Aggressive type, which keep the nervous system constantly tuned to pick up still more of the Mars broadcast. But as the brain-cells generate high electrical charges under the processes of thinking and feeling which accompany the Mercury-ruled thoughts, it is within their power to reverse the process. That is, instead of being stimulated by the electrical current coming from the body cells, the process of thought can initiate a current which stimulates another hormone, which has quite a different effect upon the body cells.

As the magus is doing in the tarot picture, by selecting such thoughts as stimulate the feeling commonly induced by the vibrations of a given planet when it receives a harmonious aspect, it is possible to tune the nervous system and the etheric energies flowing over it, so that they pick up, radio fashion, and harmoniously, the broadcasts of energy from

the selected planet. And by association, through the thoughts, the planetary energy thus acquired with any particular department of life, this harmonious energy can be diverted to working in this particular department of life to attract events such as without the use of thought would only come at a time when there was an unusually favorable progression from the planet thus tuned in on.

We of the present age possess mechanical contrivances of which the astrologer initiates of old never dreamed; and in the precision of scientific observation we far surpass their most skillful efforts. But in the practical application of thought and the utilization of astrological forces, by comparison we are mere apprentices. Through the process of trial and error, continued through ages in which they were unfettered by such materialistic dogmas as confront us today, they learned how to do those things which give control of life and destiny. And while attention was given also to other things in acquiring such control, they found the chief tool for their mastery of life in the utilization of planetary forces through the proper application of thought.

To state their views in modern terminology, the unconscious mind is built of thought-elements even as the physical body is built of chemical elements. This unconscious mind, or astral body, is fed by thoughts, or states of consciousness which accompany experiences. That is, in its ascent through innumerable lower forms of life, the awareness and emotions accompanying the soul's experiences built thought-elements into the four-dimensional, or stellar body. Through other experiences the thought-elements became organized as stellar cells, and these in turn into dynamic stellar structures.

The most powerful of these thought structures in the astral body are mapped by the planets in the birth chart; and their outstanding relations to other dynamic thought structures are mapped by the aspects in the birth chart. Thus a birth chart is a map of an individual's character, that is, of the thought organizations of his finer form, as these have been constructed up to the moment of birth in a human body.

These thought-groups and the way they are organized indicate the natural abilities with which the individual is born, and also, because thought-cell activity has an attractive power, the kind of events that will be attracted into the life unless some effort is made to change the character, that is, change the thought combinations in the finer form.

Thus does Arcanum I give a concise explanation, in symbolical pictograph, that any ability mapped by the planetary positions is due to the volume and arrangement of thought-energies within the person's unconscious mind; consequently another person can acquire identical abilities if he builds thought-energies in his unconscious mind in similar volume and arrangement.

It also shows how this is done through voluntarily tuning in, by the proper use of thought, so that the nervous system and the etheric energies flowing over it pick up only the energies of a selected planet, and these in harmony and proper relation to thought structures already within the unconscious mind. Thus an individual can acquire through his own efforts the ability to attract any event that otherwise could be brought into his life only when there is present some powerful and favorable progressed aspect.

A progressed aspect may be inevitable in the heavens, like rain or snow, heat or cold, wind or calm; but its effect on the individual is determined by the way he handles it. It means that a temporary stellar aerial is built across his astral body, for the duration of the aspect, which picks up the energies of both planets involved; and picks them up either harmoniously or loaded with static, according to the nature of the aspect.

It is so much additional energy of a given kind, reaching the thought-cells in a certain compartment of the astral body, and causing them to become unusually active. It is the unusual four-dimensional activities of these thought-cells which attract into the life at that time the indicated events.

If, therefore, through some consciously directed process a large volume of energy of a different quality is supplied the thought-cells which otherwise would get only the energy indicated by a progressed aspect, the type of their activity is changed and they work from the four-dimensional plane to attract events at that time of quite a different character. Furthermore, as all important events that come into the life are due to the activities of thought-cells that then receive unusual supplies of energy of a particular kind, if these thought-cells are supplied with that particular kind of energy in proper volume the characteristic event will be attracted, even though at the time there is no progressed aspect in the chart.

The ancient masters considered the use of thought, to tune in on planetary vibrations such as would supply the thought-cells with the proper additional energy to attract desired events, of such vast importance that they gave this teaching clearly in the very first tablet on which they inscribed what they had learned of stellar wisdom. ❁

## Consciousness and Will

In the book, *Shadows of the Mind*, Roger Penrose cites an experiment that used electroencephalograms (EEGs) to try and determine the timing of brain activity associated with an act of “free will.” Human subjects were asked to flex their index finger suddenly at various times that were entirely of their own choosing – the idea being to time the brain activity with the willing of the finger movement. The results were surprising. The recorded electrical potential (which had to be averaged over several runs due to the weakness of the signal) appeared to build up gradually for one to one and a half seconds prior to the time that the individual “willed” the finger movement. How did the brain know that the finger movement would be “ordered to happen” one and one-half seconds later? Or is this how long it takes a willed action to take place and, if so, why was consciousness not aware of the impending action earlier? Note that human “pre-programmed” response time to an external stimulus (e.g. a pin prick or hot oven) is about one-fifth of a second.

Robert Ornstein in *The Evolution of Consciousness* cites similar experiments and states that “there is evidence that movements are not just preceded by general unconscious preparatory processes, but that the brain activity preceding the movement predicts what part of the body will be moved and how, well before the moment of conscious realization. The type of movement to be made is reflected in the length and size of the readiness potential in the brain. Foot movements show a pattern distinct from that of finger movements. Pianists show preparatory brain activity longer before playing a melody than before playing a single note. Smoothness, effort, and the intention behind an action all affect the timing and size of the readiness potential, and all this happens before you are aware that you have begun to act!”

— Paul Brewer

---

Penrose, Roger (1994) *Shadows of the Mind*, Oxford University Press, 7.11, 385: In the 1970s, H. H. Kornhuber and associates (Deeke L., Grotzinger, B. and Kornhuber, H. H., 1976, Voluntary finger movements in man: cerebral potentials and theory. *Biol. Cybernetics*, 23, 99)





## The Religion of the Stars

### ***Are We More than Half Civilized?***

Elbert Benjamine

March 1941 Church of Light Quarterly, Vol 15, No. 1

*(This Crusade talk by Elbert Benjamine is of proper length for a fifteen-minute radio broadcast. It has no copyright, and anyone interested in disseminating The Religion of the Stars is welcome to use it or reprint it for that purpose.)*

What would you think of a people who were so oblivious to climatic differences and to weather changes that they ignored the existence of these environmental factors and made no preparation to cope with them! What would you do about a people who refused to note the coming of summer or winter, and who continued to plant their crops as if there were no seasons, and then complained because so many of their plantings met misfortune. What would you say of a people who knew that in a few short years they would be transferred to an entirely different country, but made no effort to learn what equipment would be of advantage to them there!

In spite of all their machines of construction and destruction, and in spite of all their material science, most people in the world today are like that. They are oblivious to the impacts which the climate and the weather of the inner-plane make upon them. They ignore planetary storms which are as disastrous to the fruition of their plans as any blizzard can be to the fruition of their crops. They make no preparation for the fine sunshiny planetary weather which if utilized would enable them to realize their ambitions. And although they know definitely that their removal to the inner plane of life is only a few short years away, they make no special effort to learn what attributes will fit them to meet the conditions certain to be encountered on that plane.

The Religion of the Stars is not put forward to destroy the religions in which people already believe. It is disseminated rather to give a sound basis of facts to the faith on which the western religions of today mostly rest, and to give information which is vitally needed if those endeavoring to lead the

lives prescribed by these religions are in these efforts to meet success.

Faith is of great power. But if it is to do its work effectively it must itself be based on facts. Faith will assist in producing a fine harvest. But if through ignorance the grain is planted at the worst possible time of year, even faith will not prevent crop failure. And the best intentions possible, when their possessor is ignorant of the operation of the forces involved, may result in irreparable injury.

Were this not the case, fond parents who through lack of astrological and psychological knowledge lavish money, ease and affection on their offspring, denying themselves that son or daughter may escape work and hardship, would not so often witness their hopes turn to ashes and their children arrive at dissolute and shiftless maturity.

Yes! In this Aquarian Age belief must be supplemented with knowledge. We must know, first of all, that each of us is a self-conscious cell in the Cosmic Whole whose body we call Nature and whose consciousness we call Deity. And we must individually realize the imminence of that Deific Consciousness. We must learn to contact the all-pervading Supreme Intelligence for ourselves, and thus gain first-hand knowledge, at least in some measure, of the existence and the purposes of God.

No, you cannot weigh the consciousness of God on the scales of the materialist; nor can that materialist weigh your consciousness on such scales. He cannot weigh any inner-plane condition in his laboratory. Your soul and the

all-pervading soul of God possess no mass. The materialist, therefore, may deny you have a soul, or that God exists. But you can prove to yourself that you have a soul through exercising its faculties, and you can become aware of the presence of the Cosmic Soul which most call God through the exercise of these same Extra-Sensory Perceptions.

Even though you cannot exercise these inner-plane senses and powers except at rare intervals which are not subject to your selection, you can, if you are an average human being, so exercise them on special occasions that you become as completely aware of the inner plane where you will dwell after physical dissolution, and as convincingly aware of the pervading presence of God, as you normally are aware that you are a conscious person on the physical plane. With such personal experiences giving you first-hand knowledge, no one will ever be able to convince you of the non-existence of Deity or of the non-existence of inner-plane life. To do so they first would have to convince you that you have no existence now in any realm.

But you do exist. You exist as a soul which potentially is immortal. And you exist on both the Outer and the Inner plane. Furthermore, as your own Extra Sensory Perceptions will apprise you if you give them proper opportunity, you will continue to exist on the inner plane after the materials which compose your physical body once more have turned to clay. These soul senses of yours, if you give them proper cultivation, will place you in telepathic touch with loved ones who have gone before, who now sojourn and carry on their joyous work in the non-material region where you will learn and labor and find delight after your residence on earth is done.

This does not mean that a moderate cultivation of these faculties of your soul will enable you to get messages from friends on the inner plane whenever you so wish. It does not mean that you will be able whenever you so desire to bring consciousness through into everyday life of the conditions which are encountered there. But it does mean that at least in rare moments your consciousness will feel the presence, and flash the import of the thoughts, of those who no longer abide on earth, and that your inner senses will, at times which are opportune, give you an occasional yet unmistakable glimpse of the region where in the future you will dwell.

Yes, you exist now on both the outer and the inner plane. And, although your physical senses are too dull, or you are too preoccupied fully to realize their power, you are responding each day of your life to both environments.

Because you were born a human being you are sensitive to heat and cold, to wind and rain, to sunshine and darkness. And because you were born with certain character tendencies mapped by your chart of birth, you are sensitive in a certain way to the impacts of astrological energies when the planets make progressed aspects. Had you been born an ani-

mal with a coat of fur, your sensitiveness to cold would have been different. Had you been born a duck, with a well-oiled cloak of feathers, the rain would have been less discomfiting. But being born a human, in your natural state storms and heat and cold have a profound effect upon the way you feel, and upon what you do.

No, you cannot change from being human. You cannot grow fur or feathers. Neither can you alter the fact that you were born with the broad character tendencies mapped by your chart of birth. You cannot acquire some other person's chart and use it as your own, no more than you can grow a coat of fur or feathers. Neither can you control the time when astral sunshine will light your way, or astral storms will tend to make detours imperative. You cannot determine what the physical weather shall be, nor can you determine what the progressed aspects in your chart shall be, or when. You are as powerless to control the inner-plane heat and cold, wind and rain, sunshine and darkness, as they reach you from progressed planets as you are to control their physical counterparts.

Yet long and painful experience has taught mankind to anticipate and prepare for seasonal changes. They have taught him also to be prepared for rain and wind. He cannot change the fact that he is a human being and thus sensitive to the buffeting of the elements. No more so than he can change the fact that he possesses the basic character tendencies mapped by his chart of birth.

But he has learned how to change his personality as a human being so that cold and wind have far less effect on him. Born without protection from inclemency, he has learned to provide himself with clothes. No longer does he go about naked, blistered by the summer sun and chilled to the marrow by the winds of winter. He cannot change the weather, but he has learned that he can change the effect of the weather upon himself by artificially altering his own personality. His hat, his raincoat, his shirt, his trousers, his shoes, all are things which he has added to his personality. When you think of people you do not think of them devoid of clothing; the clothes they wear have become an integral, even if changing, part of their personalities.

Men and women not only change the personalities with which they were born by adding appropriate clothing, but in equal measure they can change, through cultivating appropriate avenues for the expression of their energies, their characters which were mapped for them by their charts of birth. The energies are there, of a type and intensity quite precisely mapped in such a natal chart; but how these energies will find expression can be mostly altered by intelligent cultivation. The cultivation by which a given character energy finds expression in one specific activity instead of another is called conditioning. And wise conditioning will do fully as much to protect you from planetary blizzards and enable you to enjoy your highest opportunities when the

planetary sun is mildly shining, as the wise selection of apparel will enable you to make the most of the physical weather that you are equally powerless to change.

Man has learned through long and painful experience how not merely to change his personality by adding or removing clothes and thus increasing his comfort, but how also to gain an advantage by changing his environment. He cannot change the climate of the land where he dwells. He cannot change the time when pleasant breezes blow or gentle rain comes down. He cannot alter the temperature of the freezing blast that bears down on him so fiercely in winter. No more so than he can alter the nature or the time when planetary energy from icy Saturn, reaching him from the inner plane, chills and withers some fond endeavor. But he has found that by intelligently selecting his environment the effects of the weather on himself can be altered in the direction of his choice.

Man has learned to construct shelters, to build fires, to utilize shade and even air-conditioning. When the sun beats down upon him in the midst of summer time, not only does he condition himself through wearing scant attire, but he seeks the shade of some friendly tree, goes where the cooling breeze from the ocean blows, or finds an air-conditioned room. But when the snows and ice of winter hem him around he leaves these spots which gave him benefit in summer. Not only does he condition himself by wearing warmer clothes, but he seeks a physical environment where the weather now at hand will have scant chance to do him harm. He moves indoors where stalwart walls keep out the chilling winds, and he builds a fire with which to keep the atmosphere within this dwelling warm.

Long ago, before the cavemen's time and before the use of fire, there may have been an early human race who in nudity and with no knowledge of the use of fire or shelter, suffered and endured every adverse change of weather and every harshness brought by the seasons. It may be that the people of that race feasted in the abundance brought by fruitful summer, but ignorant of, or ignoring, the succession of the seasons, made no preparation for the dearth when harvest time should end.

If there ever were such a people they must have had a terrible time. To them it must have seemed an inexorable fate had decreed that one unpreventable emergency should follow another in their lives. They must have believed that a fate over which they could have no control was being kind to them when fruits and wild grains were abundant in summer. And they must have believed when the season changed and food grew scarcer and scarcer, that a fate which they were powerless to alter was chastising them.

When the summer sun blistered their skin they must have been sure that this was an inevitable event of human life; and when the winter nights almost froze the marrow in their

bones they must have been convinced there was nothing could be done but shake and shiver until the dawn.

They did not know, this early and imaginary people, what the forces were which at one time brought them joy and plenty, and at another brought them dearth and pain. And thus they suffered. So also at the present day do most people, ignorant of the impacts of progressed aspects, suffer. They did not know how to make clothing for themselves, this imaginary people; no more so than most people of today know how to condition their personalities to take advantage of the character traits mapped in their charts of birth. And they did not know how to build houses, or even to enter the protection of some natural cave. And most people of today, in so far as protecting themselves from inner-plane forces which affect their lives and fortunes as profoundly, are like this imaginary olden people. Nor do they do more to take advantage of the favorable climate and kindly weather brought at periods easily predetermined by progressed aspects.

Maybe we live in civilized times. But in view of the fact that most of the world still blisters in the heat of Mars and freezes in the cold of Saturn with no effort to protect themselves through the clothes of conditioning, or by seeking a proper environment, there is a serious doubt! We have, it is true, learned how to take advantage of the growing seasons of spring and summer. But how many take advantage of the fine inner-plane weather coincident with harmonious progressed aspects to Venus and Jupiter?

So far as the inner-plane weather and climate are concerned — a weather and climate fully as influential in all our lives as the physical — most still ignore their existence. Yet until we recognize these tremendous forces, and take adequate steps to cope with them, can we claim to be more than half civilized? ❄️



Thoughts are free and subject to no rule. On them rests the freedom of man, and they tower above the light of nature...create a new heaven, a new firmament, a new source of energy from which new arts flow.

—Paracelsus



## TOOTS RESEARCH

### The Unfinished Religion

### ENDOCRINE GLAND UPDATE

By Angelo Chirban, M.D., Hermetician and Minister

In addition to being a Great Occultist, The Master, C.C. Zain or Elbert Benjamine, was also a great naturalist. One of his intents in publicizing The Brotherhood Of Light Teachings as The Church Of Light — Religion of the Stars was to provide instructions for perfect living. To this extent, he has even provided us with instructions regarding how to stay healthy under the stress of various afflicted planets — planets under adverse progressed aspects. He writes about the influences of various hormones in several of the lessons, but he delivers his main messages in Course XXI, lessons 221-225. He did a remarkable job and his knowledge was superb. This is especially evident when it is realized that the effects of the hormones were not even known until 1922!

One of the most endearing statements made by this great man and appearing in every Course book is: “This writer is not so foolish to believe that what has already been published in the 210 Brotherhood of Light Lessons is the last word, or that no errors have been made in them, or that new demonstrated facts may not make necessary some revision of the ideas there presented.” Because of the great strides in physiology and medicine in the last 50 years, there have obviously been many “new demonstrated facts” meeting the Master’s expectations.

I intend to provide such an update regarding the hormones which affect our mundane bodies. I intend to discuss origins of the hormones, locations of their actions, mechanisms of actions and the controls of their actions. I am not qualified to discuss the planetary or occult influences on these hormones and will only reinforce the Master’s teachings regarding these aspects.

In Benjamine’s time the function of the hypothalamus was unknown. The hypothalamus is located in an area of the brain which is evolutionarily quite old — much older than the cerebral hemispheres with which the conscious mind of a human confronts mundane situations. The hypothalamus is located at the base of the brain, superior to and connected with the pituitary gland, controlling many of its functions.

Above the hypothalamus lies the thalamus (hypo = below in Greek) which is a great relay center for the brain. Thus, the other portions of the brain including the cerebral hemispheres, the sensory gathering nervous tissue, the autonomic (under control from the unconscious mind or soul) send their commands or instructions or impulses to the thalamus (relay station) and are directed down to the hypothalamus and from there to the pituitary (the master gland) and to other glands in the body.

The hypothalamus, in addition to regulating the functioning of the other glands, also regulates heart rate, body temperature, emotional (anger, fear, pain and pleasure) and instinctual functions, water and electrolyte balance, gastrointestinal activity and hunger, sleeping/wakefulness, and sexual response. You can easily see that this area is a powerful intervention point (along with the solar plexus for example) for the unconscious mind or soul to perform its actions on the mundane body. This concept is further enforced by the next anatomic area to be mentioned, the epithalamus (epi = upon or above in Greek) from which extends the pineal gland (the third eye). This entire area (epithalamus, pineal gland, thalamus, hypothalamus and pituitary gland) known as the diencephalon can be considered the area of the third eye known to the ancients (See diagram 1).

Benjamine states that “the front pituitary, which a few years ago was considered to secrete only one hormone, is now known to manufacture not less than twelve;” Many of the hormones that were felt to be secreted by the pituitary gland in Benjamine’s time are actually secreted by the hypothalamus. Additionally, the pituitary gland can be divided into, as Benjamine states “the front pituitary” and “the back pituitary” (now the posterior pituitary). The anterior pituitary is derived from the ectoderm—embryonic tissue that forms surfaces such as skin, and the posterior pituitary is derived from the neuroectoderm—embryonic tissue that forms neurologic tissue. A good way to remember the hierarchal functioning of this area is: Conscious and Unconscious Mind > Thalamus > Hypothalamus and Epithalamus > Pituitary

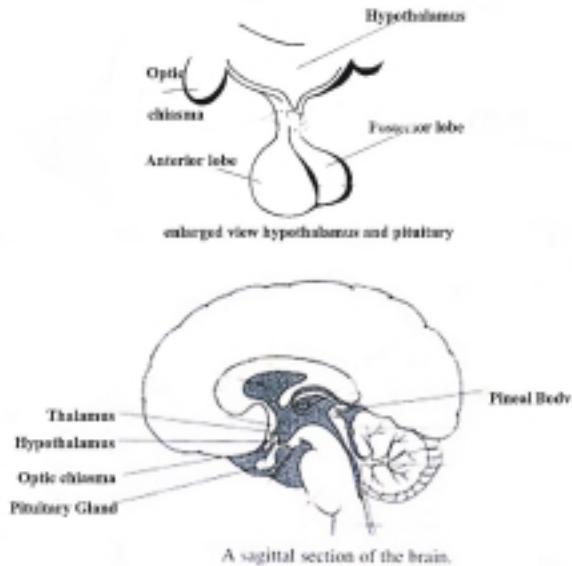


Diagram 1

and Pineal glands. The Hypothalamus secretes various “Releasing Factors” (another name for hormone, but indicates that the hormone is released from a higher center) which work on the pituitary gland and other glands to cause them to release or to inhibit release of their particular hormones.

Here it may be good to mention exactly what modern science considers a hormone to be. A hormone is either a protein or polypeptide (long chains of amino acids or short chains respectively), a steroid (derivative of cholesterol - a fat) or an amine (derivative of the amino acid tyrosine). These substances act as messengers released into the bloodstream to control and regulate distal functioning of the body. The hormone thus released reacts with specific receptor sites on the cells of its target organ or organs to cause its effect.

To further clarify, generally speaking, a releasing factor is a polypeptide hormone released from the brain (the hypothalamus) to regulate the release of a hormone from the pituitary gland called a stimulating hormone (another polypeptide) into the bloodstream to cause the release of the specific active hormone from its gland located distantly (thyroid, adrenal, gonads etc.). The releasing hormones and the stimulating hormones are regulatory hormones used by the brain and nearby pituitary gland to cause the production of and the release of the actuator hormones released from the target glands.

A good place to start with the individual hormones is in Lesson 222, of Course XXI where

*“...Long and close observation by the Church of Light Astrological Research Department relative to the effect of progressed aspects and the birth chart prominence on hormone*

*activity has established that each of the planets through birth chart prominence and by progressed aspect finds ready response from the endocrine glands as follows:*

*“Sun: influences two of the hormones of the front pituitary gland, one of which stimulates the thyroid gland and otherwise contributes to the transformation of energy necessary for sustained effort: and the other stimulates the adrenal cortex and thus with that gland determines the presence of courage. And it influences the secretion of thyroxine, the hormone of energy production. These three hormones respond either to thought-cell activity stimulated by progressed aspects involving the Sun, or to conscious thinking of the Power type.’*

These hormones under the influence of the Sun are now known as TRH - thyrotrophin releasing hormone, CRH - corticotrophin releasing hormone, TSH - thyroid stimulating hormone or thyrotrophin, ACTH - adrenocorticotrophic hormone, and thyroxine.

TRH, a releasing hormone that is a polypeptide, is released by the hypothalamus. It works on the anterior pituitary gland to make TSH, a stimulating hormone which is also a polypeptide, which works on the thyroid gland to produce and release thyroxine, an amine type hormone that is distributed throughout the blood stream and manifests the functioning of the thyroid system. By using various feedback loops, the third eye area controls the final production of thyroxine, the active hormone. When the thyroxine levels become too elevated, they work on the anterior pituitary gland to shut off production of TSH by making the cells refractory to the effects of TRH.

The effects of thyroxine, the hormone released by the thyroid gland is to accelerate metabolic rate and oxygen consumption in all body tissues, increase body temperature, affect growth and development in early life, accelerate glucose absorption and enhance the effects of the sympathetic division of the autonomic nervous system (the system that gets you ready to fight or run away). Too much thyroxine makes one hyper excitable and irritable. Too little makes one listless, slow in thought and speech, and somnolent. Too much TSH as you can see by following the feedback loop, causes enlargement of the thyroid gland and goiter. While there are other factors to consider the thyroxine is converted to triiodothyronine by the cells of the end organs and is the final and most effective extracellular thyroid hormone and then there are the intracellular effects of the hormones — I believe that too much detail will provoke boredom and go against our purposes at this time.

It is readily apparent that thyroxine is the hormone of energy as described by Benjamin (See diagram 2).

The CRH or corticotrophin releasing hormone works in a similar way on the anterior pituitary gland to release ACTH which then is released into the bloodstream to stimulate the release of cortisol (cortin to Benjamin) from the adrenal

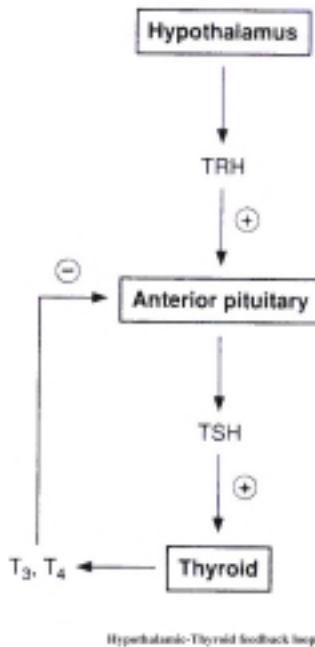


Diagram 2

cortex. The adrenal gland is composed of the cortex and the medulla. The cortex can be broken up into three layers, the outermost being the zona glomerulosa which produces aldosterone, a hormone affecting salt balance; the zona fasciculata, which produces the glucocorticoids of which cortisol is one and the zona reticularis which produces some androgens (sex hormones). The feedback mechanism of control works in a similar way to the thyroid system. A high level of cortisol blocks the effect of CRF on the pituitary and hence reduces the production of ACTH. Additionally, high levels of cortisol also work on the hypothalamus to also reduce the production of CRF (See Diagram 3).

Overall, cortisol is essential for the response to stress. It increases the amount of glucose (a sugar and the most important source of immediate energy) in the blood stream by (1) causing the breakdown of proteins, (2) decreasing the utilization of glucose in adipose (fat) tissue and (3) increasing lipolysis, the breakdown of fat to glycerol which provides the liver with more substrate to produce glucose. Cortisol has marked anti-inflammatory effects and also causes suppression of the immune response. Cortisol also maintains the responsiveness of the vascular system to catecholamines (another adrenal hormone to be discussed later).

As cortisol determines the response to stress, it can also be understood to determine the presence of courage. Not the aggressive courage of testosterone, the testicular hormone regulated by Mars, but the stubborn, hold out against overwhelming odds -type courage.

*“MOON: Influences the two hormones of the back pituitary, the thymus hormone, and the hormones of the alimentary tract. One back pituitary hormone regulates woman’s periodic functions. Pituitrin, the other back pituitary hormone, causes water to be retained in the body and the contraction of all the arteries except those of the kidneys. It causes the contraction of the plain muscles of the bowels, the bladder, the womb and other organs. It is sometimes used in childbirth to contract the womb. It also has something to do with the metabolism of the carbohydrates. Its deficiency leads to obesity. The thymus hormone tends to retard attaining maturity. These hormones respond either to thought-cell activity stimulated by progressed aspects involving the Moon, or to conscious thinking of the Domestic type.”*

The back pituitary or posterior pituitary secretes oxytocin, which causes milk ejection and uterine contraction and ADH (pituitrin to Benjamin, now also called vasopressin) is antidiuretic hormone which stimulates water reabsorption in the kidneys. The hormones which regulate “woman’s periodic functions” are several and complicated and will be discussed shortly. The thymus gland provides no known hormone but plays an important part in the development of the lymphocytes and immunity prior to its involution at puberty.

Oxytocin is essential for normal childbirth (delivery). It is used in virtually every childbirth after the delivery to aid in contracting the uterus and delivering of the placenta which passes after the child. It also, as already stated, promotes the “let down” of milk at the teats. It is also used to induce labor and to reduce postpartum bleeding.

ADH regulates serum (liquid portion of the blood as distinct from the cellular portion) osmolarity (roughly speaking,

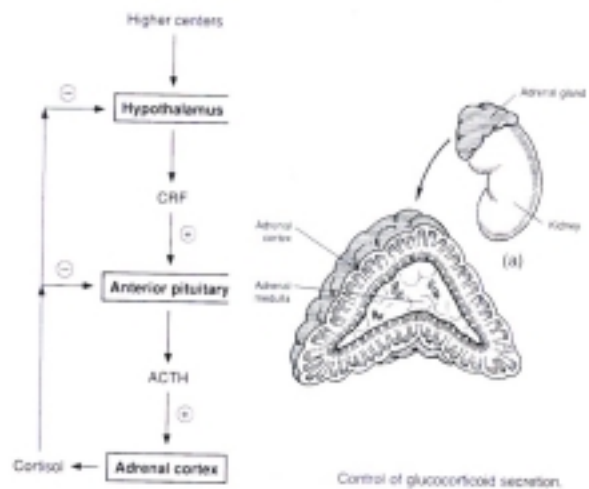


Diagram 3

how concentrated the serum is) by increasing the permeability of certain areas (the late distal tubules and collecting ducts) of the kidneys to water — thus making the serum more concentrated (adding less water — higher osmolarity) or less concentrated (adding more water — lower osmolarity). Vasopressin or ADH is also a very potent constrictor of smooth muscle — the muscle that constricts blood vessels and the gut. A disorder of the posterior pituitary gland in which ADH secretion is deficient is called diabetes insipidus (diabetes = urine and insipidus = tasteless in Latin. This is opposed to diabetes mellitus =sweet urine in sugar diabetes). In this condition, an excess of urine is made called polyuria (poly = many or much and uria = urine in Greek) causing the patient to have polydipsia (poly = many or much dipsia = drinking in Greek) i.e. great thirst sometimes necessitating standing under a running shower constantly drinking and urinating!

The regulation of a woman’s periodic functions or the female hormonal cycle is complex. We can start with the secretion of LRH, luteinizing -releasing hormone (remember releasing hormones come from the hypothalamus) which causes the secretion of LH luteinizing hormone and FSH follicular stimulating hormone by the anterior pituitary gland. FSH and LH work on the ovary by causing reabsorption of the corpus leuteum (immature follicle) and leaving a white body or corpus albicans, a mature ovarian follicle. A follicle is an arrangement of cells that remain after the ovum or egg has been shed into the uterine tube. (This uterine tube, by the way, is where fertilization takes place — not in the uterus). This mature follicle secretes estrogens, which provoke a thickening of the endometrium (the nourishing, outer lining of the uterus). The corpus leuteum secretes progesterone and estrogens, which act to level off the endometrium and ready it for implantation. If implantation fails to occur, i.e. no fertilized egg attaches itself to the endometrium, the levels of progesterone and estrogens drop and the endometrium decomposes and menses begin (See diagram 4):

It is my contention that Benjamine attributed the LRH to the “back pituitary.” This hormone being the major regulator of “women’s periodic function.”

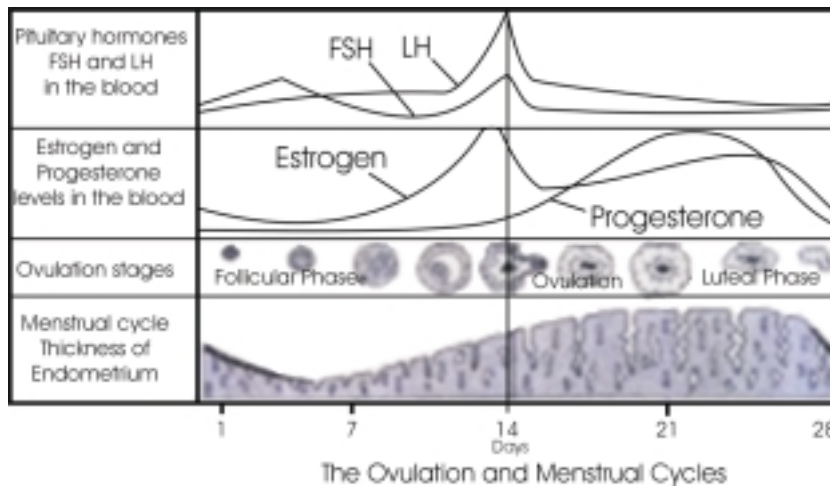


Diagram 4

“MERCURY: influences the hormone of the parathyroid glands and one of the hormones of the front pituitary. Parathyrin, the hormone of the parathyroid glands, controls the calcium metabolism of the body, and in combination with other hormones ruled by Mercury, Uranus, Neptune and Pluto, controls the type of electrification. The front pituitary hormone which responds to Mercury influences cerebral activity. These two hormones respond to thought -cell activity stimulated by progressed aspects involving Mercury, or to conscious thinking of the Intellectual type.”

Parathyroid hormone or PTH from the parathyroid glands controls calcium metabolism by increasing serum calcium. Calcitonin, from special cells in the thyroid gland, causes reduction in serum calcium. These hormones work primarily on bone (the major storage source for calcium,) but PTH also works on the gut and the kidneys to increase serum calcium.

I believe that the hormone from the front pituitary which responds to Mercury and influences cerebral activity described by Benjamine has not yet been discovered. This is very interesting and exciting! At this time there are no known specific hormones from the pituitary gland that are related to thinking. There are however, many types of chemicals se-

creted from the third eye area of the brain (including the pituitary) that influence other parts of the brain such as endorphins and enkephalins. These substances are being studied now. Endorphins, for example are released during sex, prolonged exercise (runner’s high) and after using some illicit drugs such as heroin and are responsible for the pleasurable sensations or feelings registered by the brain. They influence mood, perception of pain, memory retention and learning. These substances were not discovered until the late 1960’s and the 1970’s! I believe that the Master picked up this information on one of the Astral levels and that it pertained to the future and was not yet a part of Mundane knowledge!

“VENUS: influences the hormone of the thyroid gland and the hormones of the gonad glands. Testosterone is the male sex hormone of the testes. Alphaestradiol has been found to

*be the active principle of estrone, the female hormone of the ovaries. It is now commonly referred to as the estrogenic hormone. These gonad hormones contribute to virility and rejuvenation. The corpus leuteum hormone, progesterin, the hormone of pregnancy, also responds to Venus. The thyroid secretion, thyroxin, is the hormone of energy production. These hormones respond either to thought-cell activity stimulated by progressed aspects involving Venus, or to conscious thinking of the Social type.”*

We have already discussed the thyroid gland and its hormone thyroxine under the Sun and need not say more about it here. Testosterone is indeed the male sex hormone of the testes. It is under the same control in the male that the “female periodic function” is under in the female. Namely, Gonadotrin Releasing Hormone is produced in the hypothalamus. This causes the production of Leuteinizing Hormone by the anterior pituitary. This is then released into the bloodstream and causes the testes to produce testosterone. Testosterone causes spermatogenesis (formation and maturation of sperm cells and is also responsible for the development of the male sexual characteristics like deep voice, hairy chest, large Adam’s apple, etc.

The major female hormone is estradiol (Benjamin is more correct calling it alphaestradiol or a-estradiol). Its formation and regulation was described under the Moon. Estradiol is responsible for the growth and development of the female reproductive organs and the proliferative phase (growth phase) of the endometrium (see Moon discussion). These hormones indeed contribute to virility and rejuvenation. Progesterin or progesterone has also been discussed under the Moon. It is formed by the corpus leuteum or mature follicle and makes the endometrium ripe for the implantation of the fertilized egg. After the fertilized egg has implanted and started to grow, Human chorionic gonadotropin is produced by special cells (Blastocyst) of the developing embryo which keeps the corpus leuteum functioning and producing progesterone. This keeps the endometrium of the uterus healthy and lush to provide nourishment for the embryo instead of being shed as menstrual discharge. The production of progesterone is later taken over by the placenta to maintain pregnancy.

It appears that Venus then, influences the sexual hormones and thyroid hormone through its effect on the third-eye area of the brain.

*“MARS: influences the hormones of the adrenal glands, and the hormones of the gonad glands. Testosterone, the male sex hormone, secreted by the testes, has been given great publicity as a generator of male virility and as a rejuvenator of the whole body. The adrenal glands secrete two hormones. Adrenaline, secreted by the adrenal medulla, is the hormone of emergency energy. Cortin, secreted by the adrenal cortex, is the hormone of courage. Both adrenal hormones neutralize toxicity of the blood and are the chief chemicals used by the body to fight infection. These sex hor-*

*mones and adrenal hormones respond either to thought-cell activity stimulated by progressed aspects involving Mars, or to conscious thinking of the Aggressive type.”*

Testosterone has just been discussed. The adrenals are described perfectly. Cortin, now called cortisol or glucocorticoids is merely semantics and has been discussed under Sun above. I must mention however, that rather than fight infection, the glucocorticoids actually cause increased susceptibility to infection by causing immunosuppression. These hormones are given in large doses to help prevent rejection of transplanted organs, for example; rejection is caused by the body trying to fight off a foreign invader by using its immune defense (the transplanted organ from another person which the body sees as an invader -not self). Glucocorticoids actually inhibit this immune defense allowing survival of the implant.

One of my old professors in medical school told us of when cortisol was being first used in medicine. It was tried on numerous infections. In tuberculosis for example, before specific antibiotics were developed, it was given to people dying of the disease. They immediately began feeling better and looking better — however they died of the disease even faster. This was because the cortisol took away the inflammatory aspects of the disease; however the effects on the impairment of the immunity caused them to die sooner.

I must also stress that hormones are chemical messengers only. They themselves do not neutralize or fight anything. Their concentrations in the blood are very small usually requiring special units of measurement to even describe such minute amounts.

*“JUPITER: influences the hormone of the pancreas, insulin. Sugar and starch can only be used as fuel by the body, or as the kindling necessary to burn fat, when insulin is present. The liver is the central banking system of the body where reserve fuel is stored in the form of animal starch, or glycogen. Such storing depends upon the supply of insulin. This hormone responds either to thought-cell activity stimulated by progressed aspects involving Jupiter, or to conscious thinking of the Religious type.”*

This description is as accurate now as it was then and requires no intervention on my part.

*“SATURN: influences one hormone of the front pituitary gland. This hormone governs the growth of the skeleton and supporting tissues. Saturn, equally with Mars also influences one secretion of the adrenal glands, adrenaline, the hormone of the medulla. This is the hormone of emergency energy. These two hormones respond either to thought-cell activity stimulated by progressed aspects involving Saturn or to conscious thinking of the Safety type.”*

Again the Master is 100%. We have learned a bit more regarding Growth Hormone. In addition to its function of



stimulating protein synthesis and overall growth, it is looked upon by many as the hormone of youth. There are many studies currently going on regarding the replacement of GH in older people. The levels of GH drop rapidly after adulthood is reached. Replacing GH has been shown to reverse many of the effects of aging such as poor sleep, wrinkles, graying hair, overweight, decreased muscle mass, fatigue, loss of libido. (Don't ask. I use GH both personally and professionally!)

*“URANUS: influences one hormone of the front pituitary - the one related to original thinking - and it influences the secretion of the parathyroid glands. Parathyrin, the hormone of these glands, controls the calcium metabolism of the body, and in combination with other hormones ruled by Mercury, Uranus, Neptune and Pluto, controls the type of electrification. These Uranus hormones respond either to thought-cell activity stimulated by progressed aspects involving Uranus, or to conscious thinking of the individualistic type.”*

Again I say, how very interesting and exciting! At this time there are no known specific hormones from the pituitary gland that are related to original thinking. There are however, as discussed under Mercury above, many types of chemicals secreted from the third eye area of the brain that influence other parts of the brain such as endorphins and enkephalins. Perhaps the Master picked up some information on one of the Astral levels not yet a part of Mundane knowledge!

Parathyrin or Parathyroid hormone has already been discussed, but I wanted to add a little regarding its effect on the “type of electrification”. Electrification in the body and the different cells has been studied quite extensively since Benjamine's time and proper explanation would require a separate paper. However, with regards to parathyroid hormone and calcium, the latter has a role in the stabilization of most cellular membranes, including those of nerve cells. Too much calcium tends to make them less likely to conduct an impulse; too little calcium tends to make them irritable and promote excessive impulses. Additionally, calcium plays a part in the communication between nerves and between nerve and muscle and also is very important in the contraction of muscle tissue.

*“NEPTUNE: influences the hormone of the pineal gland, and the hormone of the parathyroid glands. The hormone of the pineal gland prevents precocious maturity, and it neutralizes and depresses the secretion of adrenaline and cortin. Parathyrin, the hormone of the combination with other hormones ruled by Mercury, Uranus, Neptune and Pluto controls the type of electrification. These Neptune hormones respond either to thought-cell activity stimulated by progressed aspects involving Neptune, or to conscious thinking of the Utopian type.”*

The hormone of the pineal gland is melatonin, which indeed plays a role in controlling the onset of puberty. The levels of

this hormone drop off after puberty. It has recently been found that low levels of melatonin contribute to insomnia in the older adult. There is evidence at the current time that it may stimulate the immune system possibly by depressing the secretion of cortin (cortisol). Parathyrin (parathyroid hormone) has already been discussed.

*“PLUTO: influences the hormone of the pineal gland, one hormone of the front pituitary - the one related to cooperative effort - the cortin hormone of the adrenal cortex, and the secretion of the parathyroid glands. The hormone of the pineal gland prevents precocious maturity, and it neutralizes and depresses the secretion of adrenaline and cortin. Cortin is the hormone of courage, neutralizes toxicity of the blood, and is one of the chief chemicals used by the body to fight infection. Parathyrin, the hormone of the parathyroid glands, controls the calcium metabolism of the body, and in combination with other hormones ruled by Mercury, Uranus, Neptune and Pluto, controls the type of electrification. These Pluto hormones respond either to thought - cell activity stimulated by progressed aspects involving Pluto, or to conscious thinking of the Universal Welfare type.”*

We have already discussed the pineal gland, however an anterior pituitary hormone related to cooperative effort — what a wonderful hormone this would be! It could be synthesized (as most hormones are today ) and given to almost everyone. We could all use a good dose of such a miracle hormone. Unfortunately, we have yet to discover such a boon. Perhaps this is another bit of information picked up on the inner plane that lies in the future. At this time co-operative behavior amongst Humans is thought to be a learned behavior, involving pleasure and pain. We have already discussed cortin and parathyroid hormone.

In summary we can see that much of what Elbert Benjamine stated in Lesson 222 regarding the hormones and their effects on the human body was remarkably true. Remarkable because most of these hormones had just been or had not yet been discovered at the time of his writing. Some of his comments regarding the direct effects of the planets and their aspects upon the terminal endocrine glands are very interesting and have not been studied. For example, we do not really know whether an aspect of Mars or Venus might have a direct effect upon the testes or the ovaries causing increased testosterone and estradiol respectively and thus bypassing the accepted regulation from the higher centers (pituitary gland, hypothalamus, etc.). I can assure you this type of study has not been done because of the prejudice against astrology held by the “scientific” community. The descriptions of the various pituitary hormones that “influence cerebral activity,” “original thinking,” and “cooperative effort” from Mercury, Uranus and Pluto respectively are fascinating. The discovery of such substances 20 and 30 years after the Master's passage from this plane is even more so. ✎



## Hermetic Astrology

# ***From Whence Come the Energies of Progressed Aspects?***

*Elbert Benjamin*

*From February 1938 American Astrology Magazine*

Whenever a strong progressed aspect forms in any person's birth chart those closely associated with him, if they are observant, can note that he is affected in three different ways: He thinks differently than he did before the progressed aspect was within one degree of perfect. His observable behavior is different than it was before. And events of some importance come into his life, often apparently through no actions of his own.

So far as science has been able to discover, movements of any kind consume energy. There was a time when it was considered that thinking consumed very little because the loss in calories, or heat units, coincident with solving the heaviest kind of mental problems was insignificant. Almost, or quite all thus lost could be accounted for as necessary to maintain the normal bodily functions. Physical work, however, showed at once a higher consumption of fuel. Thus the assumption grew that mental work required little energy, instead, as is now known, of being the hardest work in the world.

If you will read the reports of experimental psychologists made a few years ago you will get the impression that mental work is unique in that it seems to be action produced without an adequate cause of energy use. The physical energy generated by the combustion of oxygen with fuel is measured in terms of calories. The energy it takes to raise one kilogram (about two pints) of water from 0 degrees to 1 degree C is a calorie. Just to keep alive a man requires 1,700 calories a day. It takes 170 calories to digest a meal. Reading one hour, to sustain the muscles while so engaged, consumes 5 calories. A 10-mile walk consumes 600 calories. One hour at a desk, the energy being consumed by the muscles holding the body in position, requires about 21 calories. Yet the same experimenters found that if the body is so re-

laxed as to place no extra work on the muscles, but with the brain intensely active, that so little energy is consumed that it can not be detected with the calorimeter.

It is the custom of physical scientists to consider that action of any kind consumes an adequate amount of energy, yet here apparently was an exception to the rule. It puzzled them sorely, but as they could not measure or detect the energy used in mental activity it became the assumption of many that such effort required little or no such expenditure. But they were not warranted in that conclusion. Nor are we warranted, I believe, when we witness the activities in persons' lives coincident with progressed aspects in assuming that actual and adequate energies are lacking to produce those activities.

Discoveries of material science within the past year or two have demonstrated, not only that directed thinking is the hardest work in the world, consuming a vast amount of energy, but have shown that these energies are electrical, and capable of measurement. A brief summary of these discoveries will, I believe, pave the way for the next step, which is to show the nature of the energies which are consumed in the additional thinking, the new type of behavior, and the events attracted, when an individual has a major progressed aspect operative as mapped in reference to his birth chart.

The cells of the physical body are of protoplasm, just as we believe the substance of the astral body is thought-organized psychoplasm. And each of these cells has a nucleus of protein, with is comparatively acid. Surrounding this nucleus is the cytoplasm, which is comparatively alkaline. Separating the acid nucleus and the alkaline cytoplasm of the cell is a semi-permeable membrane. Electrolytes are thus formed of the humors of the body in such a manner as to make of each cell a miniature electric battery. The semi-permeable membrane separating the nitrogen

fraction from the hydro-carbon fraction of the cell, and the membranes surrounding the cell, are adapted to storing and conducting electricity. We have long been familiar with the idea that the heat and light produced in burning wood, oil, coal or gas is merely the release of the heat and light radiated by the sun and stored in the plant. Also that the heat of the human body, and much of its energy, is derived from the release of solar heat from such carbon compounds. The green leaves of plants are able to store these solar energies in the process of photosynthesis by which they manufacture the carbo-hydrates from the carbon dioxide of the air and water.

But the function of the nitrogen compounds in releasing high-frequency energies is the latest discovery. Material science now holds that these high-frequency energies, which are of far greater intensity than the heat radiations due to oxidation of the carbon compounds, furnish the electrical, or etheric, energy which runs the body.

Nitrogen as it occurs in the air, due to the firm binding of its atoms in pairs, is one of the most inert chemical elements. But when these pairs of atoms can be rent asunder, nitrogen becomes one of the most active of all chemical agents, forming with the oxygen of the air the unstable oxides of nitrogen, such as enter into the nitro group.

Carbon compounds united with this nitro group form the most powerful explosives known. Glycerin, for instance, when the nitro group is added, becomes nitroglycerine; toluol, a coal product, when the nitro group is added, becomes the explosive TNT. Iodine and chlorine are elements essential to human life; and the iodide of nitrogen is so sensitive it may be exploded by a delicate electric charge or a slight mechanical disturbance; while the rays of the sun, a slight jar, or the lightest contact with the fringe of an oiled feather will detonate chloride of nitrogen.

Part of the energy of TNT, nitroglycerine, and gunpowder is derived from the energy of solar radiation stored in the carbon compounds. But glycerin, charcoal, etc., by themselves can not be exploded. The high-frequency energy content of such explosives is due to the nitrogen compounds. And in protoplasm, carbon compounds — sugars and fats — are joined with nitrogen compounds, called proteins.

Scientists hold that the temperature of the surface of the sun, about 6,000 C, is insufficient for its radiations to tear apart the paired nitrogen atoms of the atmosphere. Lightning, terrestrial electricity, and nitrifying bacteria, however, are able to do this. The Fixed Nitrogen Research Laboratory at Washington reports that one hundred million tons of nitrogen are thus fixed annually by lightning and carried to the earth's soil by the precipitation of rain, snow and hail.

Because lightning puts more energy into the fixation of nitrogen than the sun's radiance puts into the carbon atom, the oxidation of a nitrogen compound, such as protein, emits a

shorter wave than the oxidation of a carbon compound, such as the fats and sugars. That is, each cell of protoplasm, in addition to generating heat, emits waves of high frequency, capable of knocking electrons off of atoms and thus creating an electric charge.

Such electrical charges, Dr. Edwin J. Cohn, Professor of Biological Chemistry at Harvard, found to be present on the giant protein molecules, which previously had been considered electrically neutral. Measuring these charges, he points out that the movement of such an electro-magnetic molecule operates like the armature of a dynamo. It produces an electric current. And these electric currents are the etheric energies which flow over the nerves and enable the mind to control the body.

It is thus held that protein molecules are able to release the high-frequency energy of the lightning which fixed the nitrogen that plant life took from the soil. This is in accordance with Einstein's Law of Equivalence: that the energy of an atom is given out in the same quanta as those received by the atom. And these short-wave radiations have properties with which we have become familiar in the radio. In fact, Dr. Cohn used the same technical developments in the measurements of the electrical properties of the giant protein molecules that have led to the improvement of the radio.

Of all the cells of the human body, those of the nervous system are best adapted to the production of short-wave radiations, as well as to carrying electric currents. And the gray matter of the frontal lobes of the brain are the best adapted of the nerve cells in this respect. These, because of their high specialization, are the ones chiefly employed in objective thinking.

This discovery of the electrical properties of protein proves that the nervous system of man is a radio broadcasting set. And it also means, because scientists have found these electrical phenomena of the nervous system to be reversible, as when the cells recharge in sleep, that the nervous system is a delicate receiving set, capable of intercepting short-waves which reach it from other broadcasting sets; and, as I believe, from the planets. Each cell of physical life, whether a portion of a larger plant, animal or man, or independent of such an organization, is a generator of electrical charges and radiates short wave-length energies. Through these etheric motions it is kept in contact, I believe, with the four-dimensional thought-cells which constitutes its intelligence. It is these four-dimensional thought-cells, thus associated through short wave-length etheric radiations with the physical cells, that enable blood, corpuscles, epithelial cells, and various physical organs intelligently to continue their special kind of work even after they have been removed from the body of an animal. In the Rockefeller Institute for Medical Research, for instance, a chicken heart has not only been kept alive but beating in a glass tube of nutrient solution, and constantly growing, for over 25 years.

So long as the electrical equipment is able to perform its function of furnishing short-wave radiations the thought-cells, which have gained their experience for such work in less advanced forms, are able to keep contact with the physical, and to exercise control of its movements through directing the flow of electrical energies. But when, for any reason, the battery runs down, the essential conditions of contact between the three-dimensional and the four-dimensional plane are no longer present, the thought-cells can not exercise control, and the physical is pronounced dead.

Thus also, in order that the brain cells shall vibrate sufficiently to register as objective consciousness, electric energy is expended. The cells of the gray matter of the brain are the most effective electric batteries of the body. Yet all conscious thought, as has now been proved by laboratory experiments, consumes electric energies. And like any electric battery if the circuit is kept closed it tends to run down. If you keep your foot on the starter of your car, you are aware that the current weakens, and that if this is continued your battery goes dead. So, not only with the brain, but with every cell and organ of the body, if it is to continue to perform its function it must be given an opportunity to recharge.

Yet if, before the battery is dead, the circuit is broken, it recharges itself. For a battery thus to recharge, it has to have resting periods. And all the organs of the body are provided with such periods of rest in order that they may not become completely polarized, or dead. The nerve cells that operate the breathing, for instance, thus rest from sixteen to eighteen times per minute. The heart and its nerves take some seventy to ninety short rests between beats per minute; and the various other glands and organs take brief rests between their periods of rhythmical activity.

The brain, because its effective use, requires a longer period of activity not broken by short periods of loss of consciousness, has developed the power to generate moderately strong electrical currents over a considerable length of time. Yet for it to recharge it also must have a period of rest commensurate with the work it has done. Commonly, the period of rest is about eight hours out of each twenty-four. This period of rest, during which the cells of the brain recharge, is known as sleep.

A rabbit kept awake, but otherwise kindly treated, always dies, usually on the fourth or fifth day. Other animals and human beings, prevented from sleeping, also die. They die because the circuit has been closed so long the battery has completely run down. It has had no opportunity to recharge.

Rabbits and such animals as have been kept awake by scientists to determine the electrical effect of loss of sleep have been given the minimum amount of stimulation to keep them awake. But college students used for the same purpose, have been tested in connection with the different de-

grees of mental activity. The more intense the mental activity and the more concentration required the sooner exhaustion was observed.

In electrical terms, this means that to keep the attention directed to some predetermined line of thought, the brain cells related to that line of thought must generate, or mobilize an electrical potential higher than the electrical potential generated, or mobilized, by the brain cells receiving stimulation from the desires of dissimilar thought-cells or from incoming nerve currents. In other words, the thoughts to which the attention of objective consciousness are given, must be able to command and use electrical energies of higher voltage than other thoughts which compete with them for attention can command. It is because it must consume so much electrical energy in overcoming these resistances, even more than that such thinking is a recently acquired biological process, that directed thinking is the hardest work in the world.

The reason scientists for so long considered that such brain work consumed almost no energy is because they were trying to measure a low frequency energy, that of heat waves, in connection with brain and nerve activity. With the discovery that the body consumes more electrical energy than heat energy, they acquired a new and clear conception of the immense amount of energy consumption required for directed thinking.

And I believe that when we grasp the significance of the nervous system, and the high-frequency electric energies which it carries, as connecting up with the still more difficult-to-detect planetary energies, we will no longer consider that progressed aspects operate without an adequate energy consumption.

The human body is more sensitive than any mechanical device so far constructed. For instance, during the past year Dr. J.D. Hardy and T. W. Opper, of Russell Sage Institute of Pathology and New York Hospital, have reported that the human skin is more sensitive to small temperature differences than are the most sensitive thermometers. But just because at present no thermometers are keen enough to detect these slight temperature variations they are not denied an existence. The effects observed upon the skin are not considered to be without an adequate expenditure of energy; in this case an expenditure of heat energy.

And with the example before us of scientists once considering brain work to require no appreciable expenditure of energy because as yet they were unable to detect the kind of energy expended, it would seem unjustified to consider that the work accomplished coincident with progressed aspects is not the result of adequate energy expenditure.

If you will observe any individual of your acquaintance when a heavy progressed aspect nears its culmination you will observe that he thinks the type of thoughts astrologers associate with the planets involved in the aspect. That is, if

Venus is one of the planets, affectional matters occupy his mind more than is usual; if Mars is one of the planets, strife is apparent in his thinking; or if Saturn is one, his thoughts turn more than is their custom to caution, fear, system, hard work or loss. And it seems as difficult to believe that this result in the type of thinking which is observed to be present when a given planet is party to a progressed aspect, is brought about through an abstraction, without energy expenditure, as it is to believe that thinking does not consume energy.

Or to state the matter in a slightly different way: there are ten planets, and whenever there is a strong progressed aspect to one of them, the thinking is always noticeably colored in the direction of the type attributed to this particular planet, and not toward the type attributed to planets not then involved in a progressed aspect. The implication is, therefore, that in some manner the energies of the planet are able to influence those electrical energies which when they vibrate the brain cells give rise to objective thinking.

Furthermore, this thinking relates to the department of life mapped by the houses in the birth chart ruled by the planet. That is, not only the general type of thinking is colored by the planets making the progressed aspect, but the department of life about which there is more than usual thinking is likewise indicated.

It would seem, therefore, that the progressed aspect operates as an aerial by which the energies of the planets involved in the aspect are picked up in more than normal volume and added to the factors of the unconscious mind. These factors are not dependent for their persistence upon association with a physical organism; but they are dependent for certain types of expression, which we call objective thinking and behavior, upon such association.

We can perceive very readily how a given type of thinking is sure to influence the behavior. That is, if a man has a progressed aspect in his chart to Mars, and thus his mind becomes more energetic, daring and aggressive than usual, it is quite apparent that his physical actions will be more apt to tend in the direction of hazards and strife. And, whatever planet does receive a powerful progressed aspect, it does color the physical behavior in the direction astrologers attribute to it. This is something easy to observe.

However, a large portion of the events which come into people's lives are not the necessary outcome of their observable

actions. A freeze that destroys crops, a fire that causes loss, an automobile accident, a letter from a distance offering a position, the death of a relative, the inheritance of wealth, may have no observable connection with either merit or preventable behavior.

The Brotherhood of Light Research Department has checked the birth charts and progressions at the time important events came to pass in the lives of thousands of people. The result of this vast accumulation of evidence shows that important events are attracted into people's lives only during the time an appropriate major progressed aspect is within one degree of perfect. The event is characterized by the planets making the aspect; and relates to the department of life ruled in the birth chart by the planets involved in the aspect.

We can not believe these uniformly observed results are achieved without an adequate expenditure of energy. Something exerts a pressure upon environment at a distance in such a manner as to attract the event which is characteristic of the special kind and trend of energy expended. We have come to believe, therefore, that events and conditions are attracted into human lives — and into the lives of all other creatures — due to the activities of the thought-cells within the astral form. The astral form of every living thing is composed of such, cells, built by the consciousness accompanying experiences.

These stellar-cells, the more active of which are organized into the dynamic structures mapped by the planets in the birth chart, have a certain intelligence of their own, and work from the four-dimensional plane, to attract into the life conditions and events corresponding to the way they feel.

When they receive no additional energy from any source they have only the amount and kind of activity indicated by the birth chart. It is only when, from some source, such an aerial formed by a progressed aspect picking it up, they receive an additional energy supply that their activity is greater than the normal thus shown. That is, events of a specific type, and related to a definite department of life, are attracted into the life during the time the appropriate progression is within one degree of perfect because the thought-cells of the unconscious mind relating to this department of life then receive sufficient energy and of a kind that enables them to do the work necessary to bring the event to pass. ❄





*An important message to our readers!*

**There is no subscription for  
The CofL Quarterly...but,  
The CofL Quarterly IS NOT FREE...**

Before there were 21 BofL Courses...even before The Brotherhood of Light became the Church of Light...Elbert Benjamine began publishing an Annual Newsletter (these can be read in the Archive Section of the CofL web site). From that time the annual evolved into a Quarterly. Even during the times when the CofL could barely afford to keep the lessons in print, there was a Quarterly. Until the web site was activated it was the only means by which the far flung CofL membership could know anything at all about one another. It has always been the official means for sharing CofL news and information.

There is one thing you may be sure of ...the Quarterly is here to stay. Although there have been many lovely and generous contributions to the Quarterly Fund, many of our readers have never made a contribution.

The CofL is a non-profit religious corporation and does not charge fees...however, we do find that donations keep the energy flowing! If you have enjoyed the Quarterly please consider sending a donation ...it doesn't have to be large or small..both are needed and appreciated. Whatever is in your heart and your means is exactly the right amount!

*Thank you. The Quarterly really is your magazine!*

Be sure to visit the Archive Section at [www.light.org](http://www.light.org)...  
Quarterly articles and other magazine articles from the  
past are featured.

**QUARTERLY DONATION FORM**

Name: \_\_\_\_\_

Member/Friend Number: \_\_\_\_\_

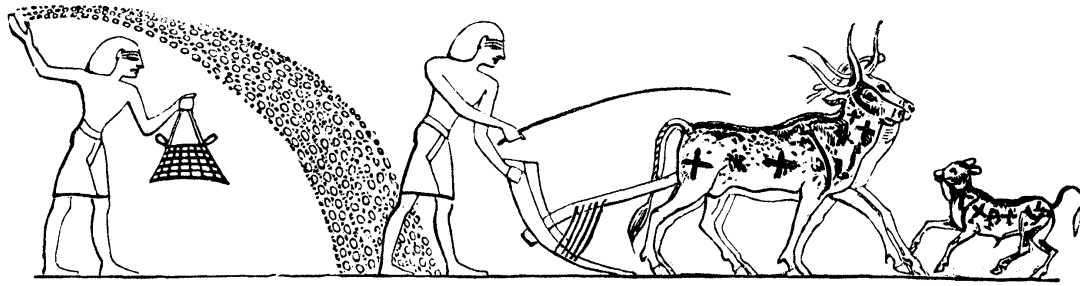
Address: \_\_\_\_\_

Phone: \_\_\_\_\_

Yes, I wish to make a contribution in the amount of \$ \_\_\_\_\_

No thank you... I wish to have my name removed from your mailing list.

Mail to: *The Church of Light, 111 S. Kraemer Blvd., Suite A, Brea, CA 92821*



## Stellarian Honor Guard

To those who financially support the work of spreading the Religion of the Stars, we are truly grateful.

**Guardian Angels** contribute more than \$500 in a quarter.

The **Stellarian Honor Guard** is reserved for those who contribute between \$100 and \$500 per quarter.

If you donate on a regular basis you form the solid foundation from which the church can work and grow. Thank you.

May we all grow and prosper together!

### Guardian Angels

- Anonymous
- Barbara & Donald Baker
- Steve & Bessie Carrothers
- Rev. Dr. Russ Durocher
- Margaret Joscher
- Eileen Pyzik
- Ray M. Watson Trust Fund

### Stellarian Honor Guard

- Anonymous
- Benjamin Badowski
- Patricia Beard
- Paul & Vicki Brewer
- John & Marion Bronsky
- Doris Chase Doane  
& John Ahern
- Bill Allen Gallop
- Robert Gilman

- Rick Grigg
- Shirley & Bob Hall
- Barbara Kniffen
- Thomas Linville
- Maria Lozada & Dee Wellmon
- Patrick & Radine Ramsey
- Jewell & William Richman
- Isabella Suleymanova
- Gregory Taylor
- Dorothy & Roland Wissler

### Regular Contributors

- Anonymous
- G. Balasubramani
- Victor Battaglia
- Karl F. Berger
- John & Marion Bronsky
- Christopher Castoe
- Delilah Cooper
- Church of Light Dallas
- G.E. Davoren
- Graham M. Dry
- Leonard Fletcher
- A. Edenau Gibson
- Pauline Greene
- Barbara Herndon
- Donald W. Ingrao
- Wm. H. Jeffrey
- Shari L. Johnson
- Stephanie Jones
- Donald Koen
- Dimitrios Konteas
- David L. Louchart
- Lester P. Lewis
- Lorrie Lovett
- Mark Mackey
- Ann M. Martin
- Harriet McMahon

- Wayne McDonald III
- Maggy Miles
- Raul C. Montoya
- Jeffrey W. Moore
- Hector Morales
- Comfort A. Onitiri
- Kay Packard
- Dolores Patterson
- Peter Pearson Sr.
- Carolyn Perryman
- Brian D. Phillips
- Randahl Purchase
- Pedro Rosales
- Wanda Gibson Richardson
- Hugh M. Russell
- Joe S Saucedo
- Michael F. & Beatrice Saucedo
- Danielle L. Savoie
- Virginia & Don Schmit
- Barbara Sibley
- Esther Skoegard
- Don Brooks Smith
- Marianne Thalken
- Joan Titsworth
- Janet Ann White
- Susan C. White
- LeRoy Williams
- Geronald L. Wilson Sr.
- Jean Wright





## Membership Room

Don't forget...you can use the web site to make book orders and donations! It is secure and fast.



[www.light.org](http://www.light.org)

If you have an event you wish to see on the Calendar please let HQ know.

Please give your feedback. It's your site ....it must work for you!

Reaching the CofL is just an e-mail away!

[ChurchOfLight@light.org](mailto:ChurchOfLight@light.org)

### Talented CofL Members

The following poem was written by CofL member Richard Dorris...we thought some of you might enjoy it also:

#### "Watch Tower

"Keeping in-Touch, between him and you,"  
Tapping the forces, that enlightens the few.

They possess the eye, that has no lens,  
They calculate the bull, and count the twins.

They open the doors, to the arcane path,  
Using the keys of metal, and universal math.

The weather that blows, the hidden wind,  
Is refracted by spheres, that alter its trend.

The love of life, that is seen with light,  
That is faster than green, blue or white.

It is called the One, the solar ray,  
From gold to silver, from iron to clay.

It reaches the minus, that orbits the plus,  
From lines of thoughts, to utter disgust.

Its influence is shown to those who hold,  
The keys of metal, of silver and gold.

These souls in question, using Solomon's power,  
Stand humble and true, on top of the tower."

### Thank you very much for the feedback!

We love receiving your responses and comments here at CofL Headquarters. We apologize for being slow to respond but we are small in number and mighty in purpose. We try and include a representative example of your comments in the Quarterly to help keep the energy flowing between all of us. It's always good to hear the voice of a kindred spirit!

\*\*From a new member

"I just want to write to tell you that I've been a spiritual seeker for about 25 years. I've learned, and still practice yoga and some effective meditation practices. In all my years of study of metaphysical principles I've pretty much ignored and dismissed astrology because I never heard an explanation that made sense. I recently started studying hermetic teachings and finally decided that I needed to come to a conclusion about astrology since many hermetic practitioners, and many other teachers I've encountered over the years, practiced or used it.

"I must admit that I started this course believing that I would end up trying to filter out the useful principles from the astrology but after reading this first book [Course I, *Laws of Occultism*] I have to admit that I'm very impressed with the presentation. This is the first presentation of astrology that makes complete sense to me and I'm surprised and am enjoying the study. In addition, the principles are quite scientifically sound. I'm also pleased that Mr. Benjamine urged readers not to take the teaching solely on faith but to test in life and personal experience and since this is the only way I know to test spiritual teachings, I'm going to do what he recommends. I've enjoyed the discoveries I've made in this reading and I'm looking forward to continuing and completing my study of these principles and making more discoveries!"

\*\*5-8-01

A person from Arlington Texas called with interest in membership information after being bequeathed CofL material from a deceased member... Those seeds just keep growing!

\*\*9-10-00

Long time member, Jewel Richman sends this comment about some of the CofL's more illustrious members...I sup-



pose you could call this gossip but it's such a good story about real people who made such a difference in our lives!

"...Mildred [Schuler] gave her all when Benjamine was living. They got along really well. She got up that convention that I sent you a picture of. She was a guest at Maria and Elbert's home at that time. She really liked Maria but said she had to cook big roasts for Elbert. He told her he had to have meat. Mildred hadn't eaten any meat since 1926. Elbert and Maria visited Mildred too. She said they worked until the wee hours of the morning on something pertaining to the Church of Light."

\*\*4-8-01

"Thank you. I received the natal chart on my daughter and it did explain more to me in a short time than 16 years of experience! To my delight...keep up the good work."

\*\*From an Arizona member

"...My studies are going just fine and I can't recall being this enthusiastic about something since I was a teenager involved in basketball and gymnastics. Know that my thoughts and prayers are with you."

## Building a Better World

*FYI: There is a time and a season for everything, so the bible tells us. Astrologically we know this to be true. But, it seems the time for astrology is not yet nigh...close though! No doubt the last two or three decades have resulted in some very real changes in attitudes about astrology. Even so, one of the best ways to turn a lively intelligent conversation cold is to mention that astrology is a useful tool. Unfortunately, most people still see astrology as fortune telling...terrific entertainment value! To a limited extent this attitude is our own fault because we don't yet know our own limitations. Limitations are not a bad thing. In fact, a limitation once known gives definition and form. The mission of researchers everywhere is to discover the limitations of a subject and then to move beyond them when possible. However, it is difficult to maintain a spirit of inquiry and openness in a climate of disrespect and ridicule. Astrological prejudice chills the vital force that otherwise might breathe renewed vigor into the kinds of questions astrologers will ask. For most part, this prejudice is fueled by the institutions that define our culture. Scientific methods courses...in no uncertain terms... place astrology and alchemy firmly in the garbage heap of the discarded past along with charlatanism and quackery. "Science" is busy working on one side of the equation. It seeks a predictable, mechanical solution that leaves open-mindedness behind the closed doors of its narrowly defined world. Although attitudes are changing in the scientific world, the following article, written by the chancellor of Boston College, John Silber, is a good example of the prejudice that remains in important places. For real progress to occur the kind of prejudice exemplified here must be conquered by the willingness of astrologers and sci-*

*entists alike to open their eyes to truth and discovery. This article is included here because it reminds us how far we've come and how far we have to go. Remember as true pioneers we keep the flame burning until a time when science and the other institutions of culture open their eyes and discover their heart. If Aquarian Age prophecy holds true then tools for understanding the Soul will provide the much needed balance for a technological world that can hope to realize its humanitarian ideals. Three cheers for Kepler College...may they become another beacon of LIGHT and may they be blessed with an open mind, loving heart and clear thinking! And, may John Silber be blessed with the same!!!*

**"Wednesday, May 16, 2001**

### "Silliness under Seattle Stars

"Seattle has a new institution of education: Kepler College of Astrological Arts and Sciences, named for the great mathematician, astronomer and optical scientist, Johannes Kepler (1571-1630). But Kepler's scientific achievements were not decisive in making him the college's namesake. His real attraction is that he believed, to a limited extent, in astrology. He lived in the last years when a great scientist could believe in astrology.

"The promoters of Kepler College have honored Kepler not for his strength but for his weakness, as if a society advocating drunkenness named a school for Ernest Hemingway.

"The simple existence of Kepler College is worth little comment. Where there are humans, there will be folly, and institutions to advance it. But Kepler College claims that it is "the only college of astrology in the Western Hemisphere authorized to issue BA and MA degrees." This authorization does not come from the National Association of Astrologers, Witch Doctors and Soothsayers. To the contrary, Kepler is accredited by the Higher Education Coordinating Board of the state of Washington. Thus, this board used the power of law to make Kepler the peer of the University of Washington.

"Kepler's program is carried out almost entirely online. Each term, after 11 weeks at the computer, students come to the campus for a week of face time with their teachers and their fellow students. This may be a competent way to teach astrology. As long as bodies of nonsense exist, there will be people able and willing to transmit them to others. But, of course, many in the public will recognize the state as certifying not merely Kepler College but astrology itself.

"Astrology is in fact a bizarre survival from pre-scientific times. Its theories were worked out when people believed the earth was the center of the universe and that seven planets revolved around it: the Moon, Mercury, Venus, the Sun, Mars, Jupiter and Saturn.

"Although this view of the universe has been proven false, astrology continues with hardly a wobble. Astrologers plot

the state of the heavens at someone's birth on what they call a natal chart. This tracks scores of variables producing thousands of combinations, sufficient to prove anything, and therefore nothing. Any astrologer can plot a chart for a serial killer showing how the serial killings were written in the stars. What they cannot show is why other people born at the same time and place have quite different careers.

"The fact is that astrology, whether judged by its theory or its practice, is bunkum. In a free society there is no reason to prevent those who wish to learn nonsense from finding teachers who want to make money peddling nonsense. But it is inexcusable for the government to certify teachers of nonsense as competent or to authorize - that is, endorse - the granting of degrees in nonsense.

"That is what the state of Washington has done. It is hard to think how a state agency might use its authority in a way more foolish and degrading to real education.

"As long as governments are composed of humans, they will commit folly and legitimize folly. In 1692, Massachusetts legitimized the superstition of witchcraft by hanging witches. That the officials who did this followed their own deeply held beliefs and those of almost all of their constituents doesn't obscure the folly and the tragedy. And even if the officials of the state of Washington assume almost all of their constituents believe in astrology, that does not excuse them. They stand exposed as ignorant, foolish and contemptuous of the public interest."

—*Many thanks to Victoria Hill for sharing this with us.*

## Course 8 Math

Don't forget...if you need help with the math courses contact the office! And, you do not have to do courses in order...skip the math and come back if you wish.

## Classes:

Canberra AUSTRALIA

Hermetic Academy of Astrology; Julia Goldstein. Three year course work in Hermetic Astrology.

If you are conducting classes or study groups and wish to have it announced in the Quarterly, please let CofL HQ know. [ChurchofLight@light.org](mailto:ChurchofLight@light.org).

## Many Thanks

To Dr. Angelo Chirban for all the energy he contributes by grading math exams and for his work with TOOTS...The Order of the Sphinx. Dorothy Wissler for grading exams and answering letters. Donald Baker for grading exams and Barbara Baker for writing letters...both of them for their continued support in the publishing of CofL books. Allan Curthoys for his work with Mundane Astrology and counseling. Our Anonymous One who contributes so generously

to the Advertising Program. Izabela and Mark Suleymanova for helping HQ with the Russian publishing offer. Barbara Kniffen for building the archives for all of us to use. For the countless others, let us hear from you!

## Clarification

The Order of the Sphinx (TOOTS) is the officially recognized graduate program designed to meet the needs of Hermeticians. We encourage all Hermeticians to participate in this group. At the present time the group is in its formative phase and like anything new can use lots of nourishing energy. As the graduate arm of the CofL we fully expect that the fulfillment of Zain's vision for future research will be fulfilled...especially in the areas of ESP and Astrology. As papers are produced they will be reported in the Quarterly so you can all be looking forward to these results.

The next TOOTS meeting is scheduled for July 20th at CofL Headquarters.

## Tarot Cards

The BofL tarot cards are in the process of being redrawn. The process is unbelievably tedious and time consuming and absolutely necessary due to the degraded condition of the current cards. In answer to the questions about how true they will be to the original BofL deck...they are an exact replica. The process we are using is to scan the cards and then using a vector drawing program we are tracing the original image. Arcanum I, pictured on page 1 is a copy of the new card. We're excited about this project and hope that all of you will send your loving support for its timely achievement!

## Quarterly on the Web:

Look for the Quarterly on the CofL web site at <http://www.light.org>. Although you can download a copy of the Quarterly for free, donations are appreciated and needed. To read the Quarterly from the Internet, you will need a copy of Adobe Acrobat Reader, version 3 or newer. You can download the Adobe Acrobat Reader free from Adobe Systems <http://www.adobe.com/products/acrobat/readermain.html>.

We have resumed the policy of sending printed copies of the Quarterly to active members. If you do not wish to receive a hard copy please let us know.

## The Academy of Hermetic Astrology in Canberra ACT Australia

Remember to look for their Quarterly Newsletter on the Home Page. Like the CofL Quarterly their newsletter is a pdf file and will require Adobe Acrobat Reader. Its link is located on the CofL Home Page ....in the stardust next to the CofL Quarterly. ☛

**THE OFFICIAL CHURCH OF LIGHT CORRESPONDENCE LIST**

New membership is on the rise! In fact, new membership in the first half of 2001 is up by 50% from what it was this time last year. One of the most common questions asked by new and old members alike is "Can you put me in touch with other CofL members?" Church headquarters is happy to announce an all-new, streamlined system for helping our members to connect. You design your participation to fit your needs. Meet people locally or from around the world. If you have a particular area of interest or expertise, let us know. Whether you want one on one correspondence with a single pen pal or an email list filled with new faces and ideas- it's up to you!

On our end, the Church of Light staff is here to facilitate your correspondence needs. Based on response, we will provide a contact list for you, tailored to your requirements. If you have a change of address, or want to increase or decrease your participation, our assistance is yours. All information will be confidential except to you and the members of your contact list. The Church of Light will be here to field any questions or conflicts and basically keep things running smoothly for all involved.

**THE CHURCH OF LIGHT CORRESPONDENCE LIST SIGN-UP FORM**

**Section One: General Information**

Name: \_\_\_\_\_ Member Number: \_\_\_\_\_

Address: \_\_\_\_\_

Email Address: \_\_\_\_\_

**Section Two: *check all that apply***

- 1. Please put me in touch with members that live: locally in the same state in the U.S. world wide
- 2. I would like to correspond: by mail by email
- 3. I am interested in corresponding on:  astrology  tarot  alchemy  Church of Light information  
 Brotherhood of Light Lessons (specify which course(s): \_\_\_\_\_)  
 Other (please specify): \_\_\_\_\_
- 4. (Optional) My area of expertise is \_\_\_\_\_

**Section Three: *check one***

Number of people I would like on my correspondent list:  1  2 - 4  4 - 6

*In order to discourage abuse of this service, the CofL will not provide more than 6 correspondents per list. All attempts will be made to match correspondents with others who have chosen the same number of contacts for their lists.*

Please include information on the Prisoner Pen Pal Program

**Section Four:**

- Please find enclosed my free-will donation to support the CofL Correspondence List Program
- I do not wish to participate at this time, but please accept my enclosed donation of support

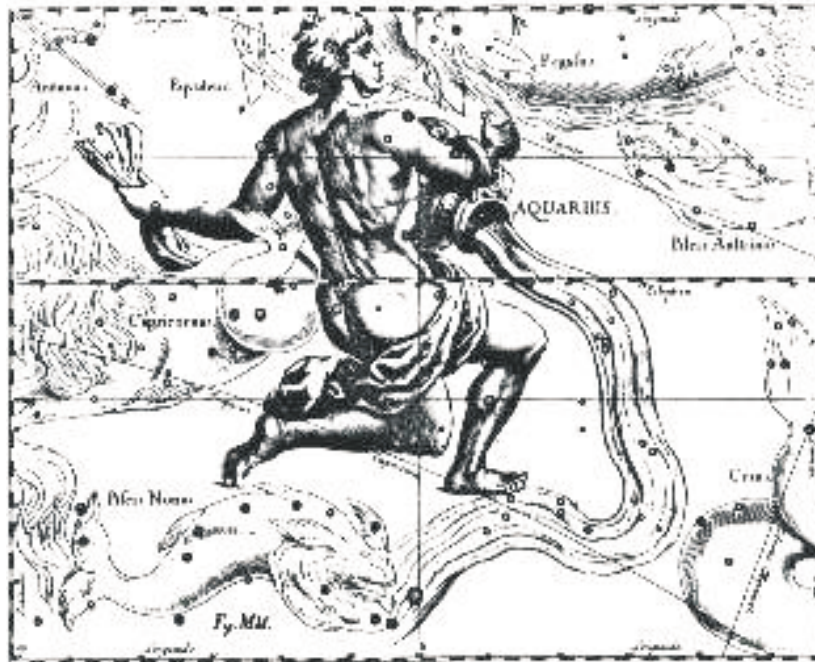
The Church of Light Correspondence List shall not be used to solicit money or services from members. Solicitation of money or services, harassment and email spamming shall be brought to the attention of the Church of Light. Members under the age of 18 must include a signed letter from a parent or guardian. All information is confidential and shall not be released to anyone other than the other members of the undersigned's contact list.

I have read and agree to the above terms of use:

Signature: \_\_\_\_\_ Date: \_\_\_\_\_

We deeply respect the cultural and intellectual diversity of our membership and are committed to providing a program to further unity, spiritual growth and philosophical expression. Join us in our mission to advance Universal Welfare and Brotherhood. Fill out and send in your form today!

*A nonprofit organization incorporated to teach, practice and disseminate The Religion of the Stars*



The Religion of the Stars teaches that every person in the world should have Freedom from Want, Freedom from Fear, Freedom of Expression and Freedom of Religion. And, to obtain these in proper measure, each must become familiar with the Facts of Astrology, the Facts of Extra-Sensory Perception, the Facts of Induced Emotion and the Facts of Directed Thinking. Rather than working to accumulate all that one can for himself or her-

self, each must learn to take pleasure in “**Contributing Your Utmost to Universal Welfare.**”

*The Church of Light* was incorporated to teach, practice and disseminate *The Religion of the Stars*, as set forth in the 21 lessons covering each of the 3 branches of occult science, as written by C.C. Zain under the auspices of *The Brotherhood of Light*.